

Department of Veterans Affairs

Report to

The Advisory Council on Historic Preservation

**In compliance with Section 3 of
The President's Executive Order 13287
"Preserve America"**

September 2004

Dennis "Max" Lewis
Senior Preservation Official

Karen Ronne Tupek
Federal Preservation Officer

Department of Veterans Affairs

Report to The Advisory Council on Historic Preservation In compliance with Section 3 of The President's Executive Order 13287, Preserve America

* * * * *

Department Overview:

Mission Statement

"To care for him who shall have borne the battle and for his widow and his orphan."

These words, spoken by Abraham Lincoln during his Second Inaugural Address, reflect the philosophy and principles that guide VA in everything we do, and are the focus of our endeavors to serve our Nation's veterans and their families.

Vision

We will strive to meet the needs of the Nation's veterans and their families today and tomorrow by: (1) becoming an even more veteran-focused organization, functioning as a single, comprehensive provider of seamless service to the men and women who have served our Nation; (2) cultivating a dedicated VA workforce of highly skilled employees who understand, believe in, and take pride in our vitally important mission; (3) continuously benchmarking the quality and delivery of our service with the best in business and use innovative means and high technology to deliver world-class service; and (4) fostering partnerships with veterans organizations, the Department of Defense and other federal agencies, state and local veterans organizations, and other stakeholders to leverage resources and enhance the quality of services provided to veterans.

Organization:

VA has three Major Administrations, under which all VA owned property falls:

- **Veterans Health Administration**

With 158 VA medical centers (VAMCs) nationwide, VHA manages one of the largest health care systems in the United States. VAMCs within a Veterans Integrated Service Network (VISN) work together to provide efficient, accessible health care to veterans in their areas. The VHA also conducts research and education, and provides emergency medical preparedness.

- **Veterans Benefits Administration**

VBA provides benefits and services to the veteran population through 58 VA regional offices. Some of the benefits and services provided by VBA to veterans and their dependents include compensation and pension, education, loan guaranty, and insurance.

- **National Cemetery Administration**

NCA is responsible for providing burial benefits to veterans and eligible dependents. The delivery of these benefits involves managing 120 National Cemeteries nationwide, providing grave markers worldwide, administering the State Cemetery Grants Program that complements the National Cemeteries network, and providing Presidential Memorial Certificates to next of kin of deceased veterans.

VA History

The United States has the most comprehensive system of assistance for veterans of any nation in the world. This benefits system traces its roots back to 1636, when the Pilgrims of Plymouth Colony were at war with the Pequot Indians. The Pilgrims passed a law which stated that disabled soldiers would be supported by the colony.

The Continental Congress of 1776 encouraged enlistments during the Revolutionary War by providing pensions for soldiers who were disabled. Direct medical and hospital care given to veterans in the early days of the Republic was provided by the individual States and communities. In 1811, the first domiciliary and medical facility for veterans was authorized by the Federal Government. In the 19th century, the Nation's veterans assistance program was expanded to include benefits and pensions not only for veterans, but also their widows and dependents.

After the Civil War, Congress established the National Home for Disabled Volunteer Soldiers (1865 – 1930) to care for veterans. Eleven branches were established nationwide, and represent the oldest VA owned buildings by virtue of the NHDVS being a predecessor agency. Since domiciliary care was available at all veterans homes, incidental medical and hospital treatment was provided for all injuries and diseases, whether or not of service origin. Indigent and disabled veterans of the Civil War, Indian Wars, Spanish-American War, and Mexican Border period as well as discharged regular members of the Armed Forces were cared for at these homes.

Congress established a new system of veterans benefits when the United States entered World War I in 1917. Included were programs for disability compensation, insurance for servicepersons and veterans, and vocational rehabilitation for the disabled. By the 1920s, the various benefits were administered by three different Federal agencies: the Veterans Bureau, the Bureau of Pensions of the Interior Department, and the National Home for Disabled Volunteer Soldiers.

The establishment of the Veterans Administration came in 1930 when Congress authorized the President to "consolidate and coordinate Government activities affecting war veterans." The three component agencies became bureaus within the Veterans Administration. Brigadier General Frank T. Hines, who directed the Veterans Bureau for seven years, was named as the first Administrator of Veterans Affairs, a job he held until 1945.

The VA health care system has grown from 54 hospitals in 1930, to include 171 medical centers; more than 350 outpatient, community, and outreach clinics; 126 nursing home care units; and 35 domiciliaries. VA health care facilities provide a broad spectrum of medical, surgical, and rehabilitative care. The responsibilities and benefits programs of the Veterans Administration grew enormously during the following six decades. World War II resulted in not only a vast increase in the veteran population, but also in large number of new benefits enacted by the Congress for veterans of the war. The World War II GI Bill, signed into law on June 22, 1944, is said to have had more impact on the American way of life than any law since the Homestead Act more than a century ago. Further educational assistance acts were passed for the benefit of veterans of the Korean Conflict, the Vietnam Era, Persian Gulf War, and the All-Volunteer Force.

In 1973, the Veterans Administration assumed another major responsibility when the National Cemetery System (except for Arlington National Cemetery) was transferred to the Veterans Administration from the Department of the Army. The Agency was charged with the operation of the National Cemetery System, including the marking of graves of all persons in national and State cemeteries (and the graves of veterans in private cemeteries, upon request) as well and administering the State Cemetery Grants Program.

The Department of Veterans Affairs (VA) was established as a Cabinet-level position on March 15, 1989. President Bush hailed the creation of the new Department saying, "There is only one place for the veterans of America, in the Cabinet Room, at the table with the President of the United States of America."

Types of Historic Properties Owned and Maintained:

Historic Properties and Buildings Inventory – Overview:

VA – Entire Department:

Historic Properties: 179

(officially listed or eligible for the National Register)

98 Formally Listed

81 Determined Eligible

Buildings: 1860± historic “contributing” buildings

Largest Federal Owners of Historic Buildings (based on sq. ft.):

(According to sources at the Advisory Council on Historic Preservation)

1st Department of Defense (Army, Navy, Air Force)

2nd Department of Interior (National Park Service)

3rd U.S. Postal Service

4th Department of Veterans Affairs

(Veterans Health Administration & National Cemetery Administration)

Agency Summaries:

National Cemetery Administration: 95 historic properties

73 Formally Listed on the National Registers (including 59 Civil War era cemeteries
nominated under a thematic, multiple property nomination)

22 Determined Eligible for the National Register

84± Historic Buildings

NCA has surveyed 100% of its land holdings for above-ground significance. The Keeper of the National Register of Historic Places has determined that all national cemeteries are national shrines and potentially eligible for the Register. The remaining cemeteries are considered “potentially eligible” and are treated as

“historic” for management purposes; these need further evaluation and documentation.

These properties are typically national cemeteries, with multiple acres of flat and/or rolling grassy land containing gravestones and monuments, road and walk ways, and enclosed with stone or other material walls and accessed by monumental gates. Many have gatehouse or administrative lodges, including 22 Civil War era lodges designed by Montgomery Meigs.

Veterans Health Administration: 84 historic properties

25 formally Listed on the National Register

59 formally determined Eligible for the National Register

1640+ contributing “historic” buildings

Note that there are some property locations counted more than once (5 are counted twice for different resource reasons and Milwaukee, for example, is counted 3 times – 1 for Listed pre-historic archaeological site, 1 for Listed Ward Memorial Theater, and 1 for remainder for Eligible NHDVS historic district).

VHA has surveyed 100% of its land holdings for above-ground significance. Almost all properties have been evaluated and most have received a formal status as to their eligibility for listing on the National Register. In the early to mid-1980's, the VA sought and received concurrences from all applicable State Historic Preservation Officers that the remaining VA medical centers DO NOT meet criteria for listing on the National Register of Historic Places. Only two exceptions to that are known: St. Cloud, MN and Menlo Park, CA; these need further evaluation.

These properties are typically medical centers in campus-like settings, with multiple buildings on many acres of manicured and landscaped land, either near or in the downtown areas of the cities for which they are named. Principle buildings are often clustered on or near the highest part of the site.

Agency Overviews and Inventories of Historic Properties:

National Cemetery Administration:

MISSION

The National Cemetery Administration (NCA) honors veterans with a final resting place and lasting memorials that commemorate their service to our nation.

Today, there are 136 national cemeteries in all. VA, through its National Cemetery Administration, administers 120 of them. Two national Cemeteries—Arlington and Soldiers Home—are still administered by the Army. Fourteen national cemeteries are maintained by the Department of the Interior.

More than 2.5 million Americans, including veterans of every war and conflict—from the Revolutionary War to the Gulf War—are honored by burial in VA's national cemeteries. More than 14,200 acres of land from Hawaii to Maine, and from Alaska to Puerto Rico are devoted to the memorialization of those who served this nation. More than 300 recipients of the Medal of Honor are buried in VA's national cemeteries.

In addition to providing a gravesite and a grave liner, VA opens and closes the grave, provides a headstone or marker, a Presidential Memorial Certificate, a U.S. Flag, and perpetually cares for the grave at no cost to the veteran's family.

NCA STATISTICS

- NCA currently maintains more than 2.6 million gravesites at 120 national cemeteries in 39 states and Puerto Rico, as well as in 33 soldier's lots and monument sites.
- More than 301,050 full-casket gravesites, 58,500 in-ground gravesites for cremated remains, and 37,900 columbarium niches are available in already developed acreage in our 120 national cemeteries.
- There are approximately 14,200 acres within established installations in NCA. Just over half are undeveloped and—with available gravesites in developed acreage—have the potential to provide more than 3.6 million gravesites.
- Of the 120 national cemeteries, 60 are open to all interments; 22 can accommodate cremated remains and family members of those already interred; and 38 are closed to new interments, but may accommodate family members in already occupied gravesites.
- Since 1973, annual interments in VA national cemeteries have doubled from 36,400 to more than 89,750 in FY 2003. Interments are expected to increase annually until the year 2008.
- Of the more than 89,750 interments conducted in FY 2003, 73.5 percent were in the 20 busiest national cemeteries: Riverside (Calif.), Calverton (N.Y.), Florida, Fort Snelling (Minn.), Jefferson Barracks (Mo.), Fort Sam Houston (Texas), Willamette (Ore.), Fort Logan (Colo.), National Memorial Cemetery of Arizona, Houston (Texas), Fort Rosecrans (Calif.), Dallas-Fort Worth (Texas), San Joaquin Valley (Calif.), Tahoma (Wash.), Massachusetts, Abraham Lincoln (Ill.), Long Island (N.Y.), Indiantown Gap (Pa.), Puerto Rico, and Santa Fe (N.M.), National Cemeteries.
- As of Sept. 30, 2003, six national cemeteries each contained more than 100,000 occupied gravesites, collectively accounting for 34.5 percent of all NCA gravesites maintained: Long Island, N.Y., (241,825); Calverton, N.Y., (153,976); Fort Snelling, Minn., (134,756); Jefferson Barracks, Mo., (120,602); Golden Gate, Calif., (112,035); and, Riverside, Calif., (125,955) National Cemeteries.
 - Largest National Cemetery: Calverton (N.Y.) 1,045 acres.
 - Smallest National Cemetery: Hampton VAMC, (Va.) .03 acres.

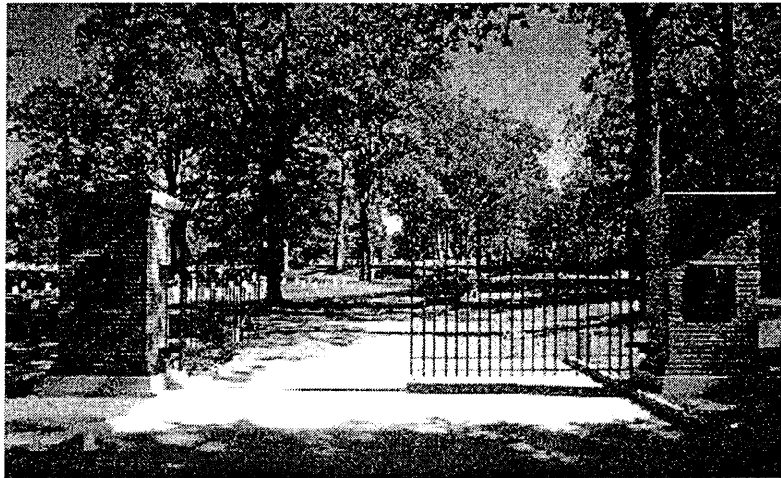
Oldest National Cemetery: 14 established in 1862 (12 are currently maintained by VA).

Newest National Cemetery: Fort Sill opened in November 2001.

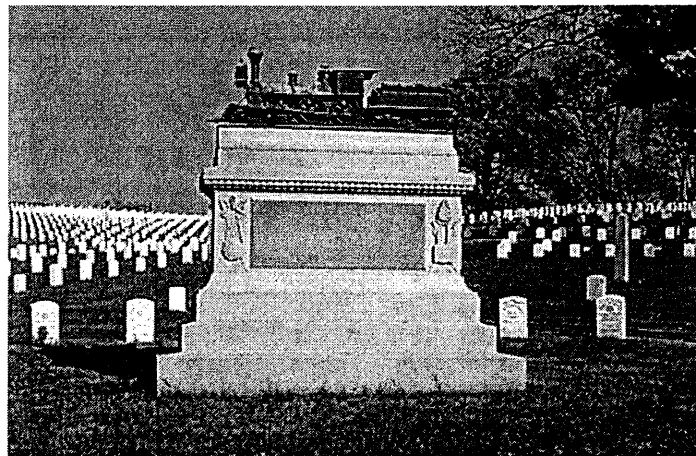
- Volunteers donated approximately 315,200 hours at national cemeteries during fiscal year 2003.
- Over 8.7 million people visited VA national cemeteries in fiscal year 2003.



Fort Smith National Cemetery, Arkansas



Togus National Cemetery, Maine



Chattanooga Choo-Choo on Gravestone, Chattanooga National Cemetery, Tennessee

Alphabetical List of Historic National Cemeteries:

<u>N/C NAME</u>	<u>N/C LOCATION</u>	<u>National Register Status*</u>	<u>Thematic Group**</u>	<u>Arche- ology Y/N</u>	<u>Date Est.</u>
Albany Rural C. S/L	Albany, New York	Pot. Elig.	Civil War Related		1862
Alexandria	Pinesville, Louisiana	NR	Civil War		1867
Alexandria	OldTown Alexandria, Virginia	NR	Civil War		1862
Allegheny Cem. S/L	Pittsburgh, Pennsylvania	Pot. Elig.	Civil War Related		1875
Annapolis	Annapolis, Maryland	NR	Civil War		1862
Ashland Cem. S/L	Carlisle, Pennsylvania	Pot. Elig.	Civil War Related		1865
Balls Bluff	Leesburg, Virginia	NR - NHL	Civil War		1865
Baltimore	Baltimore, Maryland	DOE	Former Estate		1936
Barrancas	Pensacola, Florida	NR	Civil War		1868
Bath	Bath, New York	DOE	NHDVS		1879
Baton Rouge	Baton Rouge, Louisiana	NR	Civil War		1867
Baxter Springs S/L	Baxter Springs, Kansas	Pot. Elig.	Civil War Related		1869
Bay Pines	St.Petersburg, Florida	DOE			1933
Beaufort	Beaufort, South Carolina	NR	Civil War		1863
Beverly	Beverly, New Jersey	NR	Civil War		1864
Biloxi	Biloxi, Mississippi	Pot. Elig.			1934
Camp Butler	Springfield, Illinois	NR	Civil War		1862
Camp Chase	Columbus, Ohio	NR	Civil War Related		1879
Camp Nelson	Nicholasville, Kentucky	NR	Civil War		1866
Cave Hill	Louisville, Kentucky	NR	Civil War		1863
Chattanooga	Chattanooga, Tennessee	NR	Civil War		1867
City Point	Hopewell, Virginia	NR	Civil War		1866
Cold Harbor	Mechanicsville, Virginia	NR	Civil War		1866
Congressional Cem. S/L	Washington, D.C.	NR	Soldier's Lots; Famous Burials		1817
Corinth	Corinth, Mississippi	NR	Civil War		1866
Crown Hill	Indianapolis, Indiana	NR.	Civil War		1866
Crown Hill Confed.	Indianapolis, Indiana	Pot. Elig.	Civil War		1931
Culpeper	Culpeper, Virginia	NR	Civil War		1867
Cypress Hills	Brooklyn, New York	NR	Civil War		1862
Cypress Hills Mon.	Brooklyn, New York	Pot. Elig.			1941
Cypress Hills Union/P	Brooklyn, New York	Pot. Elig.	Civil War Related		1870
Danville	Danville, Virginia	NR	Civil War		1866
Danville	Danville, Illinois	NR	NHDVS		1898
Danville	Danville, Kentucky	NR	Civil War		1862
Danville Confed. Plot	Danville, Kentucky	Pot. Elig.	Civil War Related		Unk.
Dayton	Dayton, Ohio	NR	NHDVS		1867
Fayetteville	Fayetteville, Arkansas	NR	Civil War		1867
Finn's Point	Salem, New Jersey	NR	Civil War Related		1875
Florence	Florence, South Carolina	NR	Civil War		1865
Forest Hill Cem. S/L	Madison, Wisconsin	Pot. Elig.	Civil War Related		1862
Forest Home C. S/L	Milwaukee, Wisconsin	Pot. Elig.	Civil War Related		1863
Forest Lawn Cem S/L	Omaha, Nebraska	Pot. Elig.	Civil War Related		1887
Fort Bayard	Fort Bayard, New Mexico	Pot. Elig.			1922
Fort Crawford S/L	Prairie du Chien, Wisconsin	Pot. Elig.			1904
Fort Gibson	Fort Gibson, Oklahoma	NR	Civil War		1868
Fort Harrison	Richmond, Virginia	NR	Civil War		1866
Fort Leavenworth	Fort Leavenworth, Kansas	NR	Civil War		1862
Fort Logan	Denver, Colorado	DOE			1950

Fort Lyon	Fort Lyon, Colorado	DOE	Military	1906
Fort McPherson	Maxwell, Nebraska	DOE		1873
Fort Meade	Sturgis, South Dakota	NR	Military	1878
Fort Rosecrans	San Diego, California	DOE		1934
Fort Sam Houston	San Antonio, Texas	DOE	Military	1937
Fort Scott	Fort Scott, Kansas	NR	Civil War	1862
Fort Smith	Fort Smith, Arkansas	NR	Civil War	1867
Fort Snelling	Minneapolis, Minnesota	DOE	Military	1939
Fort Whipple	Prescott, Arizona	DOE	Settlers	1863
Fort Winnebago	Portage, Wisconsin	Pot. Elig.		1862
Glendale	Glendale, Virginia	NR	Civil War	1866
Golden Gate	San Bruno, California	Pot. Elig.		1938
Grafton	Grafton, West Virginia	NR	Civil War	1867
Green Mount C. S/L	Montpelier, Vermont	Pot. Elig.	Civil War Related	1865
Hampton	Hampton, Virginia	NR	Civil War	1866
Hampton VAMC	Hampton, Virginia	DOE	NHDVS	1898
Hot Springs	Hot Springs, South Dakota	NR	NHDVS	1907
Jefferson Barracks	Saint Louis, Missouri	NR	Civil War	1866
Jefferson City	Jefferson City, Missouri	NR	Civil War	1867
Keokuk	Keokuk, Iowa	NR	Civil War	1862
Knoxville	Knoxville, Tennessee	NR	Civil War	1863
Lake Side Cem. S/L	Port Hudson, Michigan	Pot. Elig.	Civil War Related	1881
Leavenworth	Leavenworth, Kansas	NR	NHDVS	1884
Lebanon	Lebanon, Kentucky	NR	Civil War	1867
Lexington	Lexington, Kentucky	NR	Civil War	1863
Little Rock	Little Rock, Arkansas	NR	Civil War	1868
Los Angeles	Brentwood, California	DOE	NHDVS	1888
Loudon Park	Baltimore, Maryland	NR	Civil War	1862
Marietta	Marietta, Georgia	NR	Civil War	1866
Marion	Marion, Indiana	NR	NHDVS	1889
Memphis	Memphis, Tennessee	NR	Civil War	1867
Mill Springs	Nancy, Kentucky	NR	Civil War	1862
Mobile	Mobile, Alabama	NR	Civil War	1865
Mound Cem. S/L	Racine, Wisconsin	DOE	Civil War Related	1868
Mound City	Mound City, Illinois	NR	Civil War	1864
Mount City S/L	Woodlawn Cem., Kansas	DOE	Civil War Related	1874
Mount Moriah S/P	Philadelphia, Pennsylvania	DOE	Civil War Related	1878
Mount Pleasant S/L	Augusta, Maine	Pot. Elig.	Civil War Related	1862
Mountain Home	Johnson City, Tennessee	DOE	NHDVS	1903
North Alton Confed.	North Alton, Illinois	DOE	Civil War Related	1867
Nashville	Madison, Tennessee	NR	Civil War	1866
Natchez	Natchez, Mississippi	NR	Civil War	1866
Nat'l Mem/Pacific	Honolulu, Hawaii	NR	WWII; Natives	1948
New Albany	New Albany, Indiana	NR	Civil War	1862
New Bern	New Bern, North Carolina	NR	Civil War	1867
Oakdale Cem. S/L	Davenport, Iowa	Pot. Elig.	Civil War Related	1866
Oakwood Confed Mound	Chicago, Illinois	Pot. Elig.	Civil War Related	1866
Philadelphia	Philadelphia, Pennsylvania	NR	Civil War	1862
Point Lookout Confed	St. Mary's County, Maryland	Pot. Elig.	Civil War Related	1874
Port Hudson	Zachary, Louisiana	NR	Civil War	1866
Prescott	Prescott, Arizona	NR	Fort, Settlers	1863
Prospect Hill C. S/L	Brattleboro, Vermont	Pot. Elig.	Civil War Related	1864
Prospect Hill C. S/L	York, Pennsylvania	Pot. Elig.	Civil War Related	1868

Puerto Rico	Bayamon, Puerto Rico	NR		1948
Quincy	Quincy, Illinois	Pot. Elig.		1899
Raleigh	Raleigh, North Carolina	NR	Civil War	1865
Richmond	Richmond, Virginia	NR	Civil War	1866
Rock Island	Rock Island, Illinois	NR	Civil War	1863
Rock Island Confed.	Rock Island, Illinois	Pot. Elig.	Civil War Related	1863
Salisbury	Salisbury, North Carolina	NR	Civil War	1865
San Antonio	San Antonio, Texas	NR	Civil War	1867
San Francisco	"Presidio", S.F., California	NR	Military	1884
Santa Fe	Santa Fe, New Mexico	DOE	Settlers	1875
Seven Pines	Sandstone, Virginia	NR	Civil War	1866
Sitka	Sitka, Alaska	DOE		1924
Springfield	Springfield, Missouri	NR	Civil War	1867
St. Augustine	St. Augustine, Florida	DOE		1881
Staunton	Staunton, Virginia	NR	Civil War	1866
Stockade Confed.	Sandusky Bay, Ohio	Pot. Elig.	Civil War Related	1862
Togus	Togus, Maine	DOE	NHDVS	1866
Wilmington	Wilmington, North Carolina	NR	Civil War	1867
Winchester	Winchester, Virginia	NR	Civil War	1866
Wood	Milwaukee, Wisconsin	DOE	NHDVS	1871
Woodlawn	Ayer, Massachusetts	Pot. Elig.		1918
Woodlawn	Elmira, New York	Pot. Elig.	Civil War Related	1874
Woodlawn Cem. S/L	Cleveland, Ohio	Pot. Elig.	Civil War Related	1863
Zachary Taylor	Louisville, Kentucky	NR		1928

* **NR** Listed on National Register of Historic Places

NHL National Historic Landmark

DOE Determination of Eligibility for the National Register of Historic Places

These designations are official from the Keeper of the National Register of Historic Places, National Park Service, Department of Interior.

Pot. Elig. Potentially Eligible for listing on the National Register of Historic Places. These properties have not received official certificates from the National Park Service, but are generally considered by VA and State Historic Preservation Officers to be historically significant and require preservation. They need additional evaluation and documentation.

NOTE: For all of these designations, the VA must comply with Sections 110 and 106 of the National Historic Preservation Act of 1966, for all projects and property management decisions that may affect the historic districts.

**** Arch. Set** One of about 50 properties nationwide that serve as part of the VA's Architectural Set, a thematic, multiple property nomination to the National Register. They share a common prototype floor plan, campus siting/landscaping, and overall health care design strategy; the exterior facades differ regionally by architectural style.

NHDVS One of eleven branches of the National Home for Disabled Volunteer Soldiers, established after the Civil War in 1867 by Congress to care for disabled veterans.

**** Civil War** One of 59 National Cemeteries established as a direct result of and during the Civil War by Union forces for the burial of soldiers lost in battle.

Civil War Related	One of many additional National Cemeteries established during or after the Civil War to bury either Union or Confederate Soldiers. Some were established to bury disabled soldiers upon their subsequent deaths.
NHDVS	One of eleven branches of the National Home for Disabled Volunteer Soldiers, established after the Civil War in 1867 by Congress to care for disabled veterans. Each branch contained a cemetery area; these cemeteries were brought into the National Cemetery System in 1973.
Military/ Settlers	These National Cemeteries were established as a direct result of the migration of pioneer settlers into the western territories. They are mostly on or near wilderness military forts or posts that were built and staffed to defend settlers from the Indians.

Typical Components of a Historic Cemetery District:

- λ Entire cemetery property – property line is historic district boundary
- λ All early features are “contributing”
 - » Perimeter walls
 - » Gates
 - » Lodges (esp. Meigs)
 - » Artillery
 - » Monuments
 - » Rostrums
 - » Flag Pole and patio areas
 - » Headstones, memorial sculpture

NCA Historic Resources by the Numbers



- 8* Cemeteries designated a National Historic Landmark
- 13 Cemeteries containing burials of foreign-born POWs
- 21 Lodges by QM Gen. M. C. Meigs (1870-87)
- 31 Rostrums (1880-1942)
- 33 Lodges by persons other than Meigs (1877-1949)
- 33 Soldiers'/Government Lots & similar sites—all *historic*
- 49 Perimeter walls (1860s-1949; esp. 19th century)
- 56 Gates/entries (1860s-1949; especially late 19th c./1930s)
- 71* Cemeteries on the National Register of Historic Places
- 86 Technically *historic* National Cemeteries (about 72%)
- 600+ (est.) Major Memorials/Monuments (1860s–present)
- 400 (est.) Memorial Tablets/Plaques (20th century)

** Numbers being revised*

Listing by Resource Type and/or Establishment Date:

Original National Cemeteries:

<i>Cemetery</i>	<i>Location</i>	<i>Year Est.</i>	<i>First Burial</i>
Alexandria	Alexandria, Va.	1862	1862
Annapolis	Annapolis, Md.	1862	1862
Antietam ¹	Sharpsburg, Md.	1862	1862
Camp Butler	Springfield, Ill.	1862	1862
Cypress Hills	Brooklyn, N.Y.	1862	1848
Danville	Danville, Ky.	1862	1862
Fort Leavenworth	Fort Leavenworth, Kan.	1862	1827
Fort Scott	Fort Scott, Kan.	1862	1862
Keokuk	Keokuk, Iowa	1862	1861
Loudon Park	Baltimore, Md.	1862	1861
Mill Springs	Nancy, Ky.	1862	1862
New Albany	New Albany, Ind.	1862	1862
Philadelphia ²	Philadelphia, Pa.	1862	1862
Soldiers Home ³	Washington, D.C.	1862	1862

Established from 1862 to 1872 for reinterments of Civil War battle dead, soldiers who died while held prisoner and soldiers who died in hospitals.

<i>Cemetery</i>	<i>Location</i>	<i>Year Est.</i>	<i>First Burial</i>
Beaufort	Beaufort, S.C.	1863	1863
Cave Hill	Louisville, Ky.	1863	1861
Gettysburg ⁴	Gettysburg, Pa.	1863	1863
Knoxville	Knoxville, Tenn.	1863	1863
Lexington	Lexington, Ky.	1863	1861
Rock Island	Rock Island, Ill.	1863	1815
Beverly	Beverly, N.J.	1864	1864
Mound City	Mound City, Ill.	1864	1864
Andersonville ⁴	Andersonville, Ga.	1865	1865
Arlington ³	Arlington, Va.	1865	1865
Balls Bluff	Leesburg, Va.	1865	1865
Florence	Florence, S.C.	1865	1864
Fredericksburg ⁴	Fredericksburg, Va.	1865	1865
Mobile	Mobile, Ala.	1865	1865
Salisbury ⁵	Salisbury, N.C.	1865	1863
Stones River ⁴	Murfreesboro, Tenn.	1865	1865
Camp Nelson	Nicholasville, Ky.	1866	1863
City Point	Hopewell, Va.	1866	1866
Cold Harbor	Mechanicsville, Va.	1866	1866
Corinth	Corinth, Miss.	1866	1866
Crown Hill	Indianapolis, Ind.	1866	1866
Danville	Danville, Va.	1866	1866
Glendale	Richmond, Va.	1866	1866
Fort Harrison	Fort Harrison, Va.	1866	1866
Hampton	Hampton, Va.	1866	1866

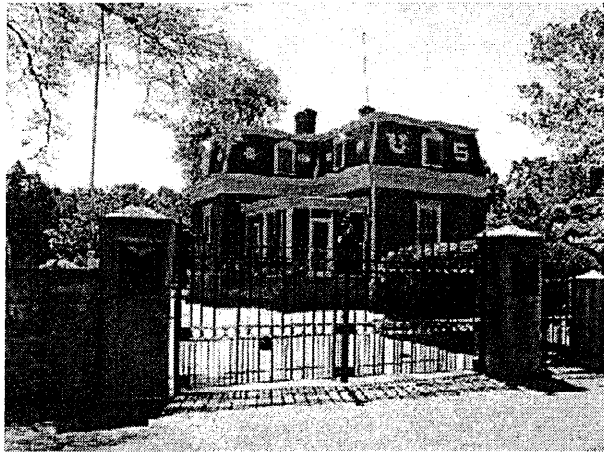
Jefferson Barracks	St. Louis, Mo.	1866	1827
Marietta	Marietta, Ga.	1866	1866
Nashville	Madison, Tenn.	1866	1866
Natchez	Natchez, Miss.	1866	1866
Poplar Grove ⁴	Petersburg, Va.	1866	1864
Port Hudson	Zachary, La.	1866	1863
Richmond	Richmond, Va.	1866	1866
Seven Pines	Sandston, Va.	1866	1866
Staunton	Staunton, Va.	1866	1866
Vicksburg ⁴	Vicksburg, Miss.	1866	1866
Winchester	Winchester, Va.	1866	1866
Yorktown ⁴	Yorktown, Va.	1866	1866
Alexandria	Pineville, La.	1867	1867
Battleground ⁴	Washington, D.C.	1867	1864
Baton Rouge	Baton Rouge, La.	1867	1867
Chattanooga	Chattanooga, Tenn.	1867	1863
Culpeper	Culpeper, Va.	1867	1867
Dayton ⁷	Dayton, Ohio	1867	1867
Fayetteville	Fayetteville, Ark.	1867	1867
Fort Donelson ⁴	Dover, Tenn.	1867	1867
Fort Lyon ⁶	Fort Lyon, Colo.	1867	1867
Fort Smith	Fort Smith, Ark.	1867	1819
Grafton	Grafton, W.V.	1867	1867
Jefferson City	Jefferson City, Mo.	1867	1861
Lebanon	Lebanon, Ky.	1867	1867
Memphis	Memphis, Tenn.	1867	1867
New Bern	New Bern, N.C.	1867	1867
San Antonio	San Antonio, Texas	1867	1867
Shiloh ⁴	Shiloh, Tenn.	1867	1867
Springfield	Springfield, Mo.	1867	1867
Wilmington	Wilmington, N.C.	1867	1867
Barrancas	Barrancas, Fla.	1868	1838
Chalmette ⁴	Chalmette, La.	1868	1868
Fort Gibson	Fort Gibson, Okla.	1868	1831
Little Rock	Little Rock, Ark.	1868	1868
Raleigh	Raleigh, N.C.	1871	1865
Wood ⁷	Wood, Wis.	1871	1867

Established from 1873 to 1973. Many were originally post cemeteries at frontier forts. Twenty-one were established on the grounds of national homes for veterans or on the grounds of VA medical facilities and did not become national cemeteries until 1973.

<i>Cemetery</i>	<i>Location</i>	<i>Year Est.</i>	<i>First Burial</i>
Fort McPherson	Maxwell, Neb.	1873	1867
Woodlawn	Elmira, N.Y.	1874	1864
Finn's Point	Salem, N.J.	1875	1837
Santa Fe	Santa Fe, N.M.	1875	1868
Fort Meade ⁸	Sturgis, S.D.	1878	1878

Bath8	Bath, N.Y.	1879	1879
Little Bighorn4	Crow Agency, Mo.	1879	1879
St. Augustine	St. Augustine, Fla.	1881	1839
San Francisco	San Francisco, Calif.	1884	1850
Danville8	Danville, Ill.	1898	1898
Hampton VAMC8	Hampton (VAMC), Va.	1898	1898
Quincy	Quincy, Ill.	1899	1862
Mountain Home8	Mountain Home Tenn.	1903	1903
Andrew Johnson4	Greenville, Tenn.	1906	1906
Fort Bayard8	Fort Bayard, N.M.	1922	1866
Sitka	Sitka, Alaska	1924	1890
Zachary Taylor	Louisville, Ky.	1928	1829
Hot Springs8	Hot Springs, S.D.	1930	1903
Leavenworth8	Leavenworth, Kan.	1930	1886
Los Angeles8	Los Angeles, Calif.	1930	1889
Marion8	Marion, Ind.	1930	1888
Prescott8	Prescott, Ariz.	1931	1864
Roseburg8	Roseburg, Ore.	1932	1897
Bay Pines	Bay Pines, Fla.	1933	1933
Biloxi8	Biloxi, Miss.	1934	1934
Fort Rosecrans	San Diego, Calif.	1934	1902
Baltimore	Baltimore, Md.	1936	1936
Togus8	Togus, Maine	1936	1866
Long Island	Farmingdale, L.I., N.Y.	1936	1936
Fort Sam Houston	San Antonio, Texas	1937	1926
Golden Gate	San Bruno, Calif.	1938	1941
Fort Bliss	Fort Bliss, Texas	1939	1848
Fort Snelling	Minneapolis, Minn.	1939	1870
Kerrville8	Kerrville, Texas	1943	1943
Alton	Alton, Ill.	1948	1862
Black Hills	Sturgis, S.D.	1948	1878
Natl. Memorial Cem. of the Pacific			
	Honolulu, Hawaii	1948	1949
Puerto Rico	Bayamon, P.R.	1948	1943

Fort Logan	Denver, Colo.	1950	1889
Willamette	Portland, Ore.	1950	1951
Eagle Point8	Eagle Point, Ore.	1952	1952
Houston8	Houston, Texas	1963	1965



Cemetery Lodges by Meigs:

National Cemetery superintendent's lodges were constructed at numerous Civil War national cemeteries from a prototypical plan, 1860's - 1900's, in different, local materials. The design and construction oversight was done by Brigadier General Montgomery C. Meigs, Quartermaster General of the Army from 1861-62.

Alexandria, Virginia	1887	Stone
Beverly, New Jersey	1879	Brick
Camp Nelson, Kentucky	1875	Brick
Cold Harbor, Virginia	1870	Stone
Culpeper, Virginia	1872	Stone
Cypress Hills, Brooklyn, New York **	1887	Brick
Finn's Point, New Jersey*	1877	
Fort Harrison, Virginia	1871	Stone
Fort McPherson, Nebraska*	1876	
Fort Scott, Kansas	1876	Brick
Glendale, Virginia	1874	Brick
Jefferson City, Missouri	1870	Ashlar Stone
Keokuk, Iowa	1870	Brick
Lebanon, Kentucky	1870	Brick/Stone
Loudon Park, Baltimore, Maryland **	1880	Brick
Mobile, Alabama	1881	Stucco
Mound City, Illinois **	1880	Brick
Port Hudson, Louisiana	1879	Brick
Richmond, Virginia	1870	Brick
Seven Pines, Virginia	1874	Brick
Staunton, Virginia	1871	Stone
Winchester, Virginia	1871	Stucco/Half Timber

National cemeteries established after 1973 that are maintained by the National Cemetery Administration.

<i>Cemetery</i>	<i>Location</i>	Year <i>Est.</i>	First <i>Burial</i>
Calverton	Calverton, N.Y.	1976	1978
Indiantown Gap	Annaville, Pa.	1976	1982
Massachusetts	Bourne, Mass.	1976	1980
Riverside	Riverside, Calif.	1976	1978
Quantico	Triangle, Va.	1977	1983
Fort Custer	Augusta, Mich.	1982	1982
Fort Richardson ⁹	Fort Richardson, Alaska	1984	1942
Fort Mitchell	Phoenix City, Ala.	1987	1987
Florida	Bushnell, Fla.	1987	1988
West Virginia	Pruntytown, W.V.	1987	1988
Natl. Memorial Cem. of Arizona ¹⁰	Phoenix, Ariz.	1989	1979
San Joaquin Valley	Gustine, Calif.	1992	1992
Tahoma	Kent, Wash.	1997	1997
Saratoga	Schuylerville, N.Y.	1999	1999
Abraham Lincoln	Elwood, Ill.	1999	1999
Dallas-Fort Worth	Dallas, Texas	2000	2000
Ohio Western Reserve	Rittman, Ohio	2000	2000
Fort Sill	Elgin, Okla.	2001	2001

Soldier's Lots: Lots reserved for soldiers in private or municipal cemeteries maintained by the National Cemetery Administration.

<i>Cemetery</i>	<i>Location</i>	Year <i>Est.</i>	First <i>Burial</i>
Fort Mackinac Post	Mackinac Island, Mich.	1814	1814
Fort Winnebago	Portage, Wis.	1862	1835
Albany Rural	Albany, N.Y.	1862	1841
Forest Hill	Madison, Wis.	1862	1861
Mt. Pleasant	Augusta, Maine	1862	1853
Forest Home	Milwaukee, Wis.	1863	1850
Woodlawn	Cleveland, Ohio	1863	1863
Prospect Hill	Brattleboro, Vt.	1864	1862
Ashland	Carlisle, Pa.	1865	1863

Green Mount	Montpelier, Vt.	1866	1865
Oakdale	Davenport, Iowa	1866	1862
Mound	Racine, Wis.	1868	1852
Prospect Hill	York, Pa.	1868	1862
Baxter Springs	Baxter Springs, Kan.	1869	1863
Mound City	Mound City, Kan.	1874	1864
Allegheny	Pittsburgh, Pa.	1875	1844
Mt. Moriah	Philadelphia, Pa.	1878	1862
Lake Side	Port Huron, Mich.	1881	1881
Forest Lawn	Omaha, Neb.	1887	1889
Fort Crawford	Prairie du Chien, Wis.	1904	1816
Woodlawn	Ayer, Mass.	1918	1918
Evergreen	Southgate, Ky.	1950	1892

GOVERNMENT LOTS:

<i>Cemetery</i>	<i>Location</i>	Year <i>Est.</i>	First <i>Burial</i>
Mt. Moriah Naval	Philadelphia, Pa.	1977	1864
Congressional ¹¹	Washington, D.C.	1808	1808

Confederate Cemeteries and Plots in Private Cemeteries:

<i>Cemetery</i>	<i>Location</i>	Year <i>Est.</i>	First <i>Burial</i>
Confederate Stockade	Sandusky, Ohio	1862	1862
Rock Island Confederate	Rock Island, Ill.	1863	1863
Confederate Mound Oak Woods	Chicago, Ill.	1866	1866
North Alton Confederate	Alton, Ill.	1867	1855
Point Lookout Confederate	St. Mary's County, Md.	1874	1864
Camp Chase Confederate	Columbus, Ohio	1879	1862
Crown Hill Confederate ¹²	Indianapolis, Ind.	1931	1931

MONUMENTS:

<u>Monument</u>	<u>Location</u>	<u>Est.</u>
Union Confederate Monument13	Kansas City, Mo.	1912
Woodlawn Cem. Confederate Monument14	Terre Haute, Ind.	1952
<p>(1) Antietam National Cemetery and Battlefield Site is administered by the U.S. Department of the Interior. The cemetery was established in 1862, but title to the land was not transferred to the War Department until 1877.</p> <p>(2) Union Soldiers who died in hospitals near Philadelphia were buried in 7 different cemeteries. These soldiers were disinterred and moved to the present location in 1885.</p> <p>(3) U.S. Soldiers' and Airmen's Home and Arlington National Cemeteries are administered by the U.S. Department of the Army.</p> <p>(4) These national cemeteries are administered by the U.S. Department of the Interior.</p> <p>(5) The remains of 11,700 unknown Union soldiers are buried at Salisbury National Cemetery.</p> <p>(6) Fort Lyon, the military post, was established in 1867 (named for Brig. General Nathaniel Lyon, killed in action at Wilson's Creek on Aug. 10, 1861, the first Union general killed in the Civil War). Remains buried in the old post cemetery were moved to Ft. McPherson National Cemetery when the Army took the post in 1887. In 1906, the cemetery was reactivated when the U.S. Navy established a tuberculosis hospital for sailors and marines at the site. In 1922, the Veterans Bureau (a predecessor of VA) assumed operation of the Fort Lyon Hospital and Cemetery.</p> <p>(7) Wood Cemetery was established on the grounds of the Northwest Branch National Asylum for Disabled Volunteer Soldiers and Dayton was established on the grounds of the asylum's central branch. The Veterans Administration assumed administration of both the facility and cemetery in 1930. It did not become a national cemetery until 1973, when VA assumed responsibility for the National Cemetery Administration.</p> <p>(8) Administered by the Veterans Administration beginning in 1973 when national cemeteries administered by the Army were transferred to VA. Became national cemeteries after that date, although they were established earlier. Most of these cemeteries were on the grounds of national homes or asylums for disabled soldiers and sailors.</p> <p>(9) Previously an Army post cemetery, reserved for active duty military personnel and their families.</p> <p>(10) National Memorial Cemetery of Arizona was established as a State Veterans Cemetery in 1979. It was transferred to the Department of Veterans Affairs in 1989 and became a national cemetery.</p> <p>(11) The site of Congressional Cemetery was first set aside as a burial ground by the Vestry of Christ Church in 1808. In 1817, the church reserved 100 gravesites for the interment of members of Congress. Today, NCA is responsible for 469 gravesites in the cemetery. In total, there are 806 government-owned sites. There are 168 cenotaphs in the cemetery that were used to memorialize congressmen who died in office. There are nine Native American Delegate Members buried in the cemetery who died while representing their tribes on delegations to Washington. There are 45 Confederate soldiers buried there as well.</p> <p>(12) The remains of 1,616 Confederate prisoners of war who died at Camp Morton in Indianapolis during the Civil War were originally buried in Greenlaw Cemetery. In 1931, their remains were reburied in Crown Hill Cemetery.</p> <p>(13) Monument in Union Cemetery erected to 15 Confederate prisoners of war who died in Kansas City and are buried in the cemetery as unknowns.</p> <p>(14) Monument in Woodlawn Cemetery erected in memory of 11 Confederate prisoners of war who died in Terre Haute and whose graves in the cemetery cannot be identified.</p>		

Veterans Benefits Administration:

VBA owns or controls only one known historic building and it is generally joined in the listings for all VHA property, as it sits isolated in the middle of VHA property at the medical center at Hines, Illinois. It is:

Building 21, used for storage. Formerly one of two buildings that served as an airplane hanger at the Checkerboard Airfield, from where Charles Lindbergh inaugurated airmail postal service from Chicago to St. Louis.

Since the lone VBA building sits in the middle of a medical center campus, adjacent to its twin VHA building, the building is included in all data related to VHA.

The remainder of this report will refer only to National Cemetery and Medical Center properties.

Veterans Health Administration (VHA):

VHA Mission Statement

The mission of the Veterans Healthcare System is to serve the needs of America's veterans by providing primary care, specialized care, and related medical and social support services. To accomplish this mission, VHA needs to be a comprehensive, integrated healthcare system that provides excellence in health care value, excellence in service as defined by its customers, and excellence in education and research, and needs to be an organization characterized by exceptional accountability and by being an employer of choice.

The Office of the Under Secretary for Health provides oversight of the Veterans Health Administration (VHA), the largest integrated health care provider in the nation. In addition to the oversight responsibilities regarding VHA's field facilities and the 21 Veterans Integrated Service Networks (VISNs) that manage their activities, the Office exercises oversight of VHA program responsibilities headquartered in VA Central Office.

List of Historic VA Medical Centers

<u>VAMC LOCATION</u>	<u>National Register Status*</u>	<u>Thematic Group**</u>	<u>Arche- ology Y/N</u>	<u>Date Built</u>
Albuquerque, NM	NR	Architecture	N	1932
Alexandria, LA	NR	Arch. Set	N	1929
Amarillo, TX	DOE	Arch. Set	N	1939
American Lake, WA	DOE	Arch. Set	Y	1923
Asheville, NC	NR	History	N	1931
Augusta (LD), GA	DOE	B-18-20, Arch.	N	1913
Batavia, NY	DOE	Arch. Set	N	1932
Bath, NY	DOE	NHDVS & Set	N	1877
Battle Creek, MI	DOE	Arch. Set	N	1924
Bay Pines, FL	DOE	Arch. Set	Y	1924
Bay Pines, FL	NR	Indians Mounds	Y	
Bedford, MA	DOE	Arch. Set	N	1928
Biloxi (BD), MS	DOE	Arch. Set	N	1932
Biloxi (GD), MS	DOE	Arch. Set	N	1923
Boise, ID	NR	Fort	Y	1863
Brockton (WRD), MA	DOE	Arch. Set	N	1943
Bronx, NY	Pot. Elig.	Chapel	N	
Canandaigua, NY	DOE	Arch. Set	N	1932
Cheyenne, WY	DOE	Architecture	N	1932
Chillicothe, OH	DOE	Arch. Set	Y	1923
Cincinnati (FTD), OH	NR	Fort	N	1890
Cleveland (BD), OH	Pot. Elig.	Bldg. 62	N	1846
Coatesville, PA	DOE	Arch. Set	N	1930
Columbia, SC	DOE	Arch. Set	N	1932

Dallas, TX	DOE	Arch. Set	N	1940
Danville, IL	NR	NHDVS	Y	1898
Dayton, OH	NR	NHDVS	Y	1867
Des Moines, IA	DOE	Arch. Set	N	1933
Fayetteville, AR	DOE	Arch. Set	N	1933
Fayetteville, NC	DOE	Arch. Set	Y	1939
Fayetteville, NC	NR	Conf. Brstwks.	Y	1865
Ft. Harrison, MT	DOE	Fort	Y	1892
Ft. Howard, MD	DOE	Fort & A. Set	Y	1943
Ft. Meade, SD	NR	Fort	Y	1891
Hampton, VA	DOE	NHDVS & Set	Y	1870
Hines, IL	DOE	Arch. Set	N	1922
Hot Springs, SD	NR	NHDVS	Y	1907
Huntington, WV	DOE	Arch. Set	N	1932
Indianapolis (CSRD), IN	DOE	Arch. Set	N	1931
Kerrville, TX	Pot. Elig.	Historic Arch.	N	
Knoxville, IA	DOE	Bldg. 27 & 28	N	1905
Leavenworth, KS	NR	NHDVS	Y	1884
Lebanon, PA	DOE	Arch. Set	Y	1947
Lexington (LD), KY	DOE	Arch. Set	N	1930
Lincoln, NE	DOE	Arch. Set	N	1929
Little Rock (NLRD), AR	NR	Fort & Set	N	1896
Long Beach, CA	NR	Indian Village	Y	Unk.
Lyons, NJ	DOE	Arch. Set	N	1929
Manchester, NH	NR	Bldg. 11	N	1888
Marion, IL	DOE	Arch. Set	N	1940
Marion, IN	NR	NHDVS	Y	1889
Miles City, MT	DOE	Art Moderne	N	1951
Milwaukee, WI	DOE	NHDVS	Y	1867
Milwaukee, WI	NR	Theater B-41	Y	1888
Milwaukee, WI	DOE	Rock Reef	Y	1837
Montgomery, AL	DOE	Arch. Set	N	1939
Montrose, NY	DOE	Arch. Set	Y	1949
Mountain Home, TN	DOE	NHDVS	N	1903
Murfreesboro, TN	DOE	Arch. Set	Y	1939
Newington, CT	DOE	Arch. Set	N	1930
North Chicago, IL	NR	Dewey House	Y	1914
Northampton, MA	DOE	Arch. Set	N	1923
Northport, NY	DOE	Arch. Set	N	1927
Perry Point, MD	DOE	Arch. Set	Y	1919
Perry Point, MD	NR	Mill & Mansion	Y	1750
Pittsburgh (Aspinwall Div.), PA	DOE	Arch. Set	N	1925
Prescott, AZ	NR	Fort	Y	1863
Roseburg, OR	DOE	Arch. Set	N	1933
Salem, VA	DOE	Arch. Set	Y	1933

San Francisco, CA	DOE	Arch. Set	N	1934
Sheridan, WY	NR	Fort	N	1898
Shreveport, LA	DOE	Archeology only	Y	
Sioux Falls, SD	DOE	Architecture	N	1920
St. Cloud, MN	DOE	Arch. Set	N	1923
Togus, ME	DOE	NHDVS	N	1866
Togus, ME	NR/NHL	Bldg. 1	N	1869
Tomah, WI	DOE	Arch. Set	N	1946
Tucson, AZ	DOE	Architecture	Y	1928
Tuscaloosa, AL	DOE	Arch. Set	N	1931
Tuskegee, AL	DOE	History	N	1923
Waco, TX	NR	Arch. Set	N	1932
Walla Walla, WA	NR	Fort	Y	1856
W. Los Angeles (BD), CA	DOE	Arch. Set	N	1920
W. Los Angeles (WD), CA	DOE	NHDVS	N	1888
W. Los Angeles (WD), CA	NR	Bldgs. 20 & 66	N	1890
White River Junction., VT	DOE	Arch. Set	N	1938
Wichita, KS	DOE	Arch. Set	N	1933

Typical Components of a Historic Medical:

- λ Entire property – property line is historic district boundary
- λ All early features are “contributing”
 - » Principle hospital patient buildings
 - » Recreation Buildings
 - » Quarters
 - » Engineering and Support Buildings
 - » Flag Pole
 - » Original/mature landscaping and hardscape features
 - » Other Buildings as mentioned under NHDVS, below:

Listing by Resource Type and/or Establishment Date:

VHA properties fall into several distinct categories:

- National Home for Disabled Volunteer Soldiers – 11 former Branches
- Architectural Set Properties:
- Architectural Design
- Unusual or Odd Properties
- Former Military Properties

National Home for Disabled Volunteer Soldiers: Most buildings remaining from use by the VA's predecessor agency, The National Home for Disabled Volunteer Soldiers (1865 – 1930). In particular, the following building types are most significant:

- Theaters
- Chapels
- Libraries
- Bandstands

- Barracks
- Mess Halls
- Unique Quarters, especially the Commandant's/Director's
- Administration/Headquarters buildings
- Odd or unique buildings, like former morgues, greenhouses, etc.

Those sites are:

The Eastern Branch	Togus, Maine	1867
The Northwestern Branch	Milwaukee, Wisconsin	1867
The Central Branch	Dayton, Ohio	1867
The Southern Branch	Hampton, Virginia	1870
The Western Branch	Leavenworth, Kansas	1885
The Pacific Branch	Santa Monica (LA), California	1888
The Marion Branch	Marion, Indiana	1888
The Danville Branch	Danville, Illinois	1898
The Mountain Branch	Johnson City, Tennessee	1901
The Battle Mountain Sanatorium	Hot Springs, South Dakota	1902
The Bath Branch	Bath, New York	1929
(formerly New York State Soldiers & Sailor Home, est. 1877)		

Architectural Set: The buildings from 50 properties nationwide that serve as part of the VA's Architectural Set, a thematic, multiple property nomination to the National Register. They share a common prototype floor plan, campus siting/landscaping, and overall health care design strategy; the exterior facades differ regionally by architectural style, many in fanciful revival styles.

Each location varies, but the most important buildings on those sites tend to be:

- Principle, main, large building, generally with a cupola or other tower structure in the middle near the traditional main entrance; also usually has a large front yard with vista from the public street
- Recreation Hall
- Director's Single Quarters; duplex staff quarters

Those sites are:

<u>VAMC Location</u>	<u>Architectural Style</u>	<u>Date</u>
Alexandria, Louisiana	French Colonial Revival	1929
Amarillo, Texas	Spanish Colonial Revival	1939
American Lake, Washington	Spanish: Neo-Pico	1923
Batavia, New York	Georgian Colonial Revival	1932
Bath, New York	Georgian Colonial Revival	1938
Battle Creek	Georgian Colonial Revival	1924
Bay Pines, Florida	Churrigueresque	1924
Bedford, Massachusetts	Georgian Colonial Revival	1928
Biloxi (BD), Mississippi	Late Southern Colonial Revival	1932
Biloxi (GD), Mississippi	Spanish Colonial Revival - Spanish Baroque	1923
Brockton (West Roxbury), Mass.	Georgian Colonial Revival	1943
Canandaigua, New York	English Tudor - Jacobethan	1932
Chillicothe, Ohio	Georgian Colonial Revival	1923
Coatesville, Pennsylvania	Georgian Colonial Revival	1930
Columbia, South Carolina	Georgian Colonial Revival	1932
Dallas, Texas	Georgian Colonial Revival	1940
Des Moines, Iowa	Georgian Colonial Revival	1933
Fayetteville, Arkansas	Georgian Colonial Revival	1933
Fayetteville, North Carolina	Georgian Colonial Revival	1939
Fort Howard, Maryland	Georgian Colonial Revival	1943

Hampton, Virginia	Georgian Colonial Revival	1937
Hines, Illinois	Georgian Colonial Revival	1922
Huntington, West Virginia	Georgian Colonial Revival	1932
Indianapolis (CSR), Indiana	Georgian Colonial Revival	1931
Lebanon, Pennsylvania	Georgian Colonial Revival	1947
Lexington (LD), Kentucky	Georgian Colonial Revival	1930
Lincoln, Nebraska	Georgian Colonial Revival	1929
Little Rock (NLRD), Arkansas	Georgian Colonial (demolished?)	
Lyons, New Jersey	Georgian Colonial Revival	1929
Marion, Illinois	Egyptian Revival	1940
Montgomery, Alabama	Georgian Colonial Revival	1939
Montrose, New York	Georgian Colonial Revival	1949
Murfreesboro, Tennessee	Federal Revival	1939
Newington, Connecticut	Georgian Colonial Revival	1930
Northampton, Massachusetts	Georgian Colonial Revival	1923
Northport, New York	Georgian Colonial Revival	1927
Perry Point, Maryland	Georgian Colonial Revival	1919
Pittsburgh (AD), Pennsylvania	Georgian Colonial Revival	1925
Roseburg, Oregon	Georgian Colonial Revival	1933
Salem, Virginia	Georgian Colonial Revival	1933
San Francisco, California	Art Deco	1934
St. Cloud, Minnesota	Georgian Colonial Revival	1923
Sheridan, Wyoming	Georgian Colonial Revival	1945
Tomah, Wisconsin	Georgian Colonial Revival	1946
Tuscaloosa, Alabama	Georgian Colonial Revival	1931
Waco, Texas	Italian Renaissance Revival	1932
W. Los Angeles, California	Spanish Colonial Revival	1920
White River Junction, Vermont	Georgian Colonial Revival	1938
Wichita, Kansas	Georgian Colonial Revival	1933

Architecturally Important: Four sites built within the timeframe of the Architectural Set, but prototype design was not used. Noted for outstanding revival architecture influenced by host community. Main buildings, courtyard areas, theaters, and quarters at:

Albuquerque, New Mexico	Pueblo Revival Style	1932
Cheyenne, Wyoming	Prairie Style	1932
Sioux Falls, South Dakota	Gothic Revival	1948
Tucson, Arizona	Spanish Mission Style	1928

Unusual Sites or Buildings:

Ashville, North Carolina	Old Oteen Hospital Buildings, #1 & Quarters	1931
Augusta (Lenwood), Georgia	Three Old Convent/Hotel Bldgs.	1913
Brockton, Massachusetts	Quarters Building 60	
Bronx, New York	Chapel	
Cleveland (Brecksville), Ohio	Quarters Building 62	1846
Hines, Illinois	Checkerboard Airfield Lindbergh Supply Depots	
Knoxville, Iowa	2 Bldgs. School for Blind & Home for Inebriates	1905
Lebanon, Pennsylvania	Pennsylvania Dutch Farm Houses	1935
Manchester, New Hampshire	Gothic Stone Tower	1888
Minneapolis, Minnesota	Fort Snelling Quarters	
North Chicago, Illinois	Dewey House	1914
Paris, France	Pershing Hall	1880

Perry Point, Maryland	Mansion and Mill	1750
Salem, Virginia	Mount Airy Estate Home and Pool	1835
Togus, Maine	Governor's House National Historic Landmark	1865
Tomah, Wisconsin	17 Indian School Buildings	
Tuskegee, Alabama	Black History Buildings	1923

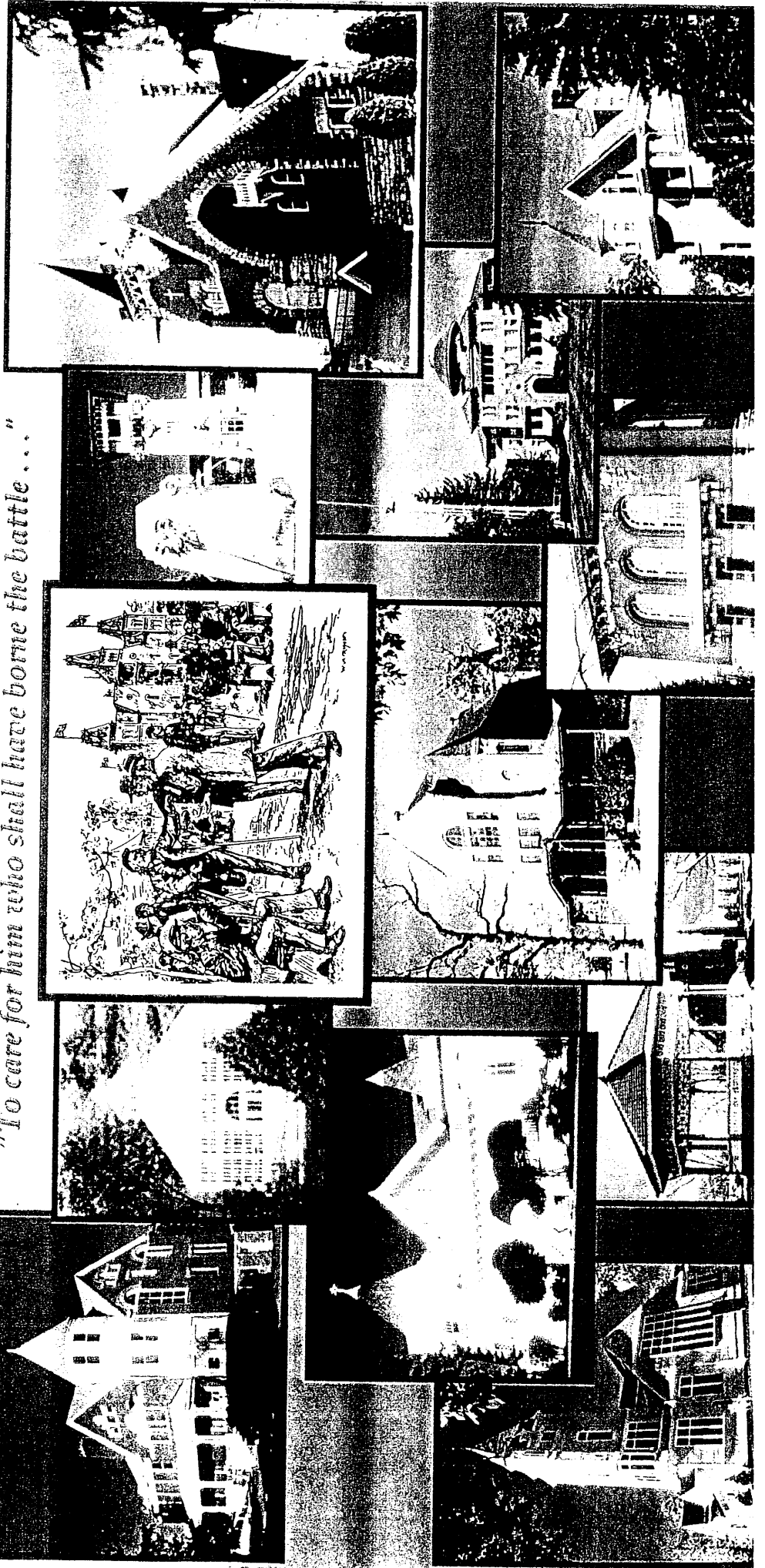
Former Military Posts: The most important buildings at these sites vary depending on the nature, layout and history of the site, but typically barracks buildings, quarters, mess halls, etc., are important.

<u>VAMC Location</u>	<u>Original Military Name</u>	<u>Date</u>
Boise, Idaho	Fort Boise	1863
Cincinnati, Ohio	Fort Thomas	1890
Fort Harrison, Montana	Fort Harrison	1892
Fort Howard, Maryland	Fort Howard	1899
Fort Lyon, Colorado	Fort Lyon	1860s
Fort Meade, South Dakota	Fort Meade	1891
Little Rock (NLRD), Arkansas	Fort Logan Roots	1896
Minneapolis, Minnesota	Fort Snelling	1921
Prescott, Arizona	Fort Whipple	1863
Sheridan, Wyoming	Fort MacKenzie	1898

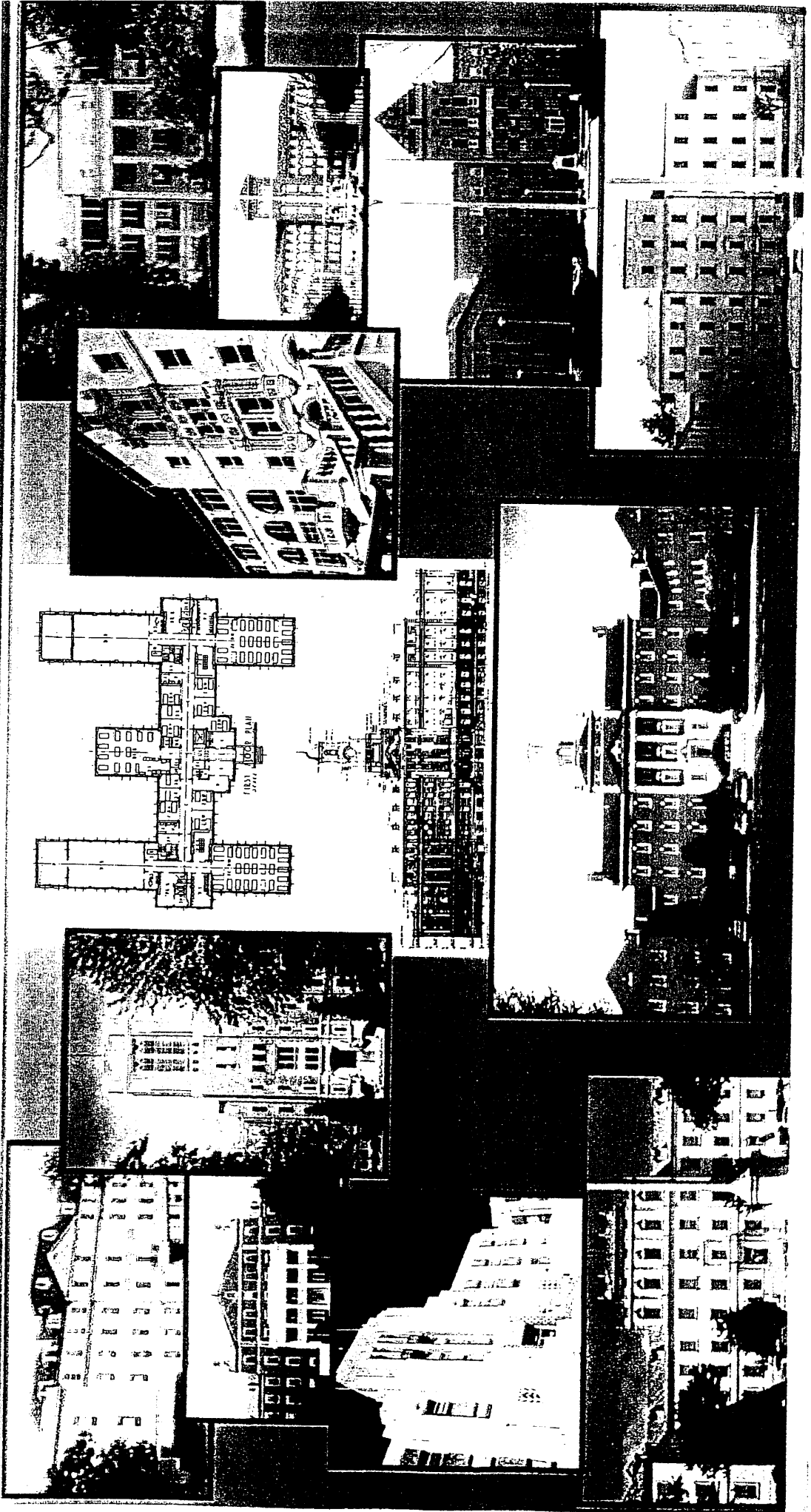
VA's Treasures

National Home for Disabled Volunteer Soldiers 1865 - 1930

"To care for him who shall have borne the battle..."



Architectural Set 1921 - 1947



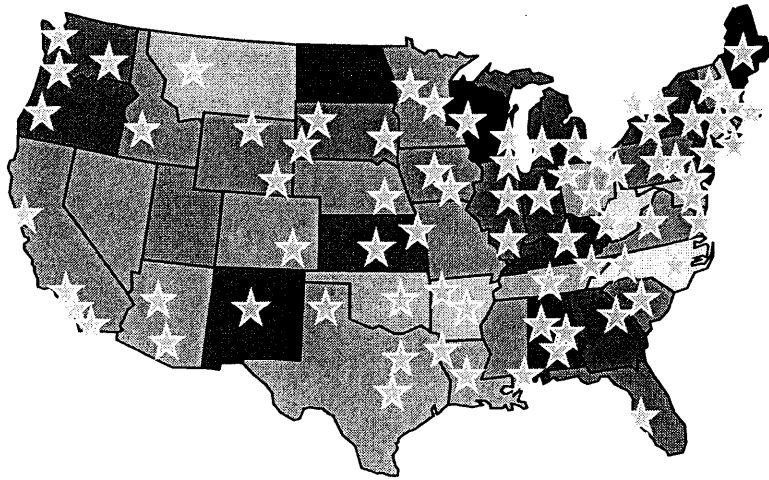
Unique Historic Resources



Distribution:

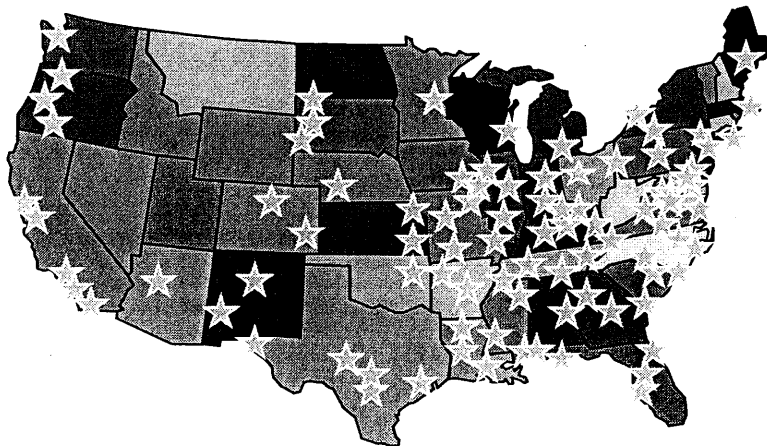
VA's Historic Medical Center Districts are all over the continental United States:

75 Historic Districts
31 Archeological Sites
1640+ Historic Buildings



VA's Historic National Cemeteries are all over the continental United States:

86 Historic Cemeteries (8 are Landmarks)
85 Historic Structures (Lodges and Rostrums)
600+ Monuments
400+ Sizable Plaques



Reporting & Systems Methodology Used for Assessment:

Inventory and Evaluations:

Ongoing since 1973, VA has taken a close look at properties and evaluated them against National Register of Historic Places criteria for listing. VA appointed a Historic Preservation Officer in 1973. Originally, letters were sent to every facility, asking them to assess their properties and send in their self-assessments, along with facility histories. Thematic patterns immediately emerged. By follow-up letters, facilities were required to photograph every structure on their property, keyed to site plans. In the late 1970's, an architect was added to the staff to evaluate the historic buildings and develop the thematic groups of historic properties. After cursory documentation all apparent historic properties had been submitted to the respective State Historic Preservation Officers and the Keeper of the National Register of Historic Places, VA had a healthy and comprehensive list of "eligible" properties.

To assist with planning and management of facilities, the Historic Preservation office followed up with documentation and analysis on the remaining VA-owned properties, to gain concurrences that these properties were not historic and did not meet criteria for listing on the National Register. So, by the mid-1980's VA had "negative determinations of eligibility" on the remainder of properties. The result greatly helped planners. Projects at those sites did not require any further compliance actions. Staff efforts and planning focused on the legally "historic" properties.

Assessments:

Through the years, various facility management studies and reports have added to the body of information that we have on the properties. Occasionally, a previously "ineligible" property would emerge with a significance that would qualify it for "listing." These reports also consistently gave feedback on the existence and status of the inventoried historic buildings. These studies included:

- Facility Development Plans
- Five Year Plans
- Facility Condition Assessments
- Capital Asset Reporting Plans
- Capital Assets and Realignment for Enhanced Services

In all cases, these studies reported on the existing condition of the buildings, the future needs for continuing to use the structures, the estimated costs to bring buildings up to standards and codes, and options for use or reuse. VA was and continues to be very pro-active in studying the properties.

Today and Future:

A few properties having now reached the age of 50 need re-evaluation. See Section "***Future Actions to Comply with Sections 110 and 111***"

Annual Heritage Asset Report as part of Financial Statement to Congress:

All historic properties, with lists of individual historic buildings, are listed on the VA website:

http://www.va.gov/facmgt/historic/Inventory_Home.asp

Every facility is required to review their listing annually and report by e-mail any changes or discrepancies to the Federal Preservation Officer. Legitimate changes are made to website and master Capital Asset data base. A Summary Report is included as VA's "Heritage Assets" in the Department's Annual Financial Report to Congress.

General Conditions and Management Needs:

National Cemetery Administration:

The National Cemetery properties are well maintained. Many are still active and have daily burials. The grounds are mowed and landscaped. Damaged or deteriorated headstones are replaced, in-kind, as needed.

The Civil War era cemeteries have additional inherent maintenance burdens. Many are enclosed with original stone walls and monumental entrance gates, which require rehabilitation. Though generally in good condition, some still need work.

Meigs Lodges and later lodges are also fairly well maintained. Some have been or are projected to be renovated. Some are vacant and holding up to deterioration in various degrees of success.

Veterans Health Administration:

All historic properties are actively used as medical centers, however, many of the listed or eligible properties have vacant buildings that have been identified during the recent CARES process. In general, all occupied and used historic buildings are in excellent condition. The standout buildings that typically are vacant and have no or little use in today's medical care environment, are those stand-alone buildings that completed the old National Home communities and provided residents with full amenities. It could be said that these buildings have suffered varying amounts of neglect, sustained vacancies, and patterns of deferred maintenance. These include:

- Chapels
- Theaters
- Recreation Halls
- Mess Halls
- Barracks
- Bandstands
- Greenhouses
- Libraries
- Quarters
- Odd structures acquired in a variety of ways: Scottish watchtower, mill, military post gates, barracks, etc.

These structures are masterpieces of revival architecture and are some of the most valued historic treasures owned by the department. However, as these buildings no longer serve a role in today's health care model, many are vacant and unused. Without a dedicated purpose to supplement medical care, they don't receive preservation funding through the priority process in formulating the construction budget. They represent VA's most endangered buildings.

Future:

There is a huge amount of current and anticipated downsizing, as medical care shifts from inpatient to outpatient care. The larger tertiary care hospitals, especially the historic campus models, are no longer the primary method of providing medical care to veterans; the large mega-structure modern hospitals are still used, but not fully, to care for only the most critical of patients, while the older historic campuses, with scattered smaller buildings, are not useful for today's programs, other than supplemental. Today, the focal point for that care is getting more and more widespread into smaller communities, closer to the veterans. VA is opening dozens of community-based clinics in small towns and rural areas, to have outpatient doctor's care within a few miles of the veterans.

Budgeting and Funds:

All VA construction and maintenance projects compete for Congressional funding. Projects are submitted for prioritization, which is based on factors that favor benefits to the veteran, whether through medical care, benefit services, or burial benefits; it does not favor preservation for preservation's sake. Separate funding is needed to assist in preserving under-utilized, but treasured buildings.

Reporting Mechanisms and Systems:

Annual Heritage Asset Report as part of Financial Statement to Congress:

All historic properties, with lists of individual historic buildings, are listed on the VA website: http://www.va.gov/facmgt/historic/Inventory_Home.asp

Every facility is required to review their listing annually and report by e-mail any changes or discrepancies to the Federal Preservation Officer. Legitimate changes are made to website and master Capital Asset data base. A Summary Report is included as VA's "Heritage Assets" in the Department's Annual Financial Report to Congress.

Capital Asset Data Base:

VHA's Office of Facilities Management maintains the entire Department's listing of all facilities, buildings, monuments, etc. Every facility has one person designated to make changes to the data base to ensure it is up-to-date. The exception to that procedure is that only the Federal Preservation Officer has the ability to change any fields in the historic information section of the data base. This ensures that someone does not arbitrarily delete historic status of a building or facility. This data base was and still is integrally used with the CARES studies.

CARES Studies:

Capital Asset Realignment for Enhanced Services (CARES) is a completed national study of all future facility needs. Projected veteran data was combined with medical care useage to assess whether current medical facilities were aligned to meet future health care needs of veterans for the next twenty years. As part of the data gathering, the conditions of buildings were noted in great detail. That data is the basis for the general summary conclusions of their current general condition.

All future facility management decisions will be made based on the results from CARES. Programs may be shifted from one location to another. Larger facilities may be downsized; some facilities may be closed. All actions of this nature are handled through the construction project process. Projects are submitted up to five years in advance, weighted and scored by central planning staff, and submitted in annual budgets to Congress for funding.

Fulfillment of Section 110 Responsibilities:

All historic properties, with lists of individual historic buildings, are listed on the VA website:
http://www.va.gov/facmgt/historic/Inventory_Home.asp

100% property surveyed for Buildings and Structures

In early 1980's, VA sought and received DOE or Neg. DOE on almost all property. Only two medical center campus remain unresolved: Menlo Park and St. Cloud.

There is not an ongoing effort to convert the determinations of eligibility into formal nominations. This is due to lack of staff and funds. Staff time is more focused on encouraging the preservation of the already identified historic resources. However, whenever there is a major construction or Enhanced Use Lease project at an "eligible" site, we try to build into the mitigation measures a stipulation that requires that project funds or lessee funding be used to prepare a formal nomination for that property.

For about 10 years in the mid-1980's to the mid-1990's, VA had on staff an archaeologist. They travel to the sites and surveyed many hundreds of acres on dozens of properties. Additionally, using document research and topo maps, they further identified properties or areas of properties that had a higher likelihood of containing archaeological resources. Using this information, VA attempts to avoid high areas and when necessary, hires an archaeologist to conduct field research and/or to be present for ground-disturbing activities.

Compliance with Section 111 for Properties leaving VA Control:

Ensuring preservation:

When transferring properties outside of VA control, through transfer of deed or lease, VA generally adds a covenant to the deed or lease that essentially transfers the basic Federal preservation requirements to the new owner or lessee – basic consultation with the SHPO on future undertakings. For Leases, the dispute resolution would re-involve VA.

For Enhanced Use Lease projects, where a developer takes over control of the property for up to 75 years, VA transfers the Federal preservation responsibilities over to the lessee.

Future Actions to Comply with Sections 110 and 111:

Nominations to the National Register:

Continue efforts to have "eligible" properties nominated to the National Register of Historic Places. This is typically added as a mitigation measure in negotiated agreements for projects at the property. That is the primary means of obtaining funding.

National Park Service Partnership:

Have just recently signed an Interagency Agreement with the National Park Service, Midwest Region, for the NPS to conduct National Landmark Study of the eleven VA properties - former branches of the National Home for Disabled Volunteer Soldiers. Properties deemed worthy will be nominated for Landmark status. This study will increase knowledge of the properties, raise public and employee awareness and assist management in decisionmaking.

Archaeology:

Enlist the services of an archaeologist to continue surveying VA property, ranking the probability of finding resources, and conducting more intensive testing on potential sites.

Increase knowledge of potential historic properties:

Re-evaluate buildings that have since turned 50 years old, including the post WWII era buildings:

Post WWII - VA Designed 500 Bed Hospitals:

To serve the many veterans needing care after World War II, the VA undertook a massive program of building in many places around the country another prototype hospital which we now call the "Bradley 500 Bed Hospital" in reference to then VA Administrator Omar Bradley and the approximate number of beds in the design. The number of actual beds varied slightly to accommodate the site or other variables. Due to the need for getting these buildings in use quickly, they are austere and lack architectural embellishment.

<u>VAMC Location</u>	<u>No. of Original Beds</u>	<u>Date</u>
Albany, New York	500	1951
Ann Arbor, Michigan	487	1952
Chicago, Illinois	488	1953
Cincinnati, Ohio	487	1954
Columbia, Missouri	500	
Dallas, Texas	500	1952
Denver, Colorado	485	1951
Durham, North Carolina	500	1953
Indianapolis (WTSD), Indiana	486	1952

Kansas City, Missouri	500	1952
Louisville, Kentucky	486	1946
Marlin, Texas	500	1950
Minneapolis, Minnesota	500	1947
Oklahoma City, Oklahoma	488	1953
Palo Alto, California	500	1958
Philadelphia, Pennsylvania	488	1950
Providence, Rhode Island	393	1949
Saginaw, Michigan	500	1950
St. Louis, Missouri	487	1953
Syracuse, New York	488	1953
VARIATIONS:		
Marlin	193	
Minot	162	
Saginaw	193	

Hospitals Constructed by the Corps of Engineers: February 1946 - May 1954

In the early Fall of 1945, General Omar Bradley, VA Administrator, decided to request the Corps of Engineers (OCE or Corps) assistance in building hospitals needed for the VA post-World War II expansion which Congress had already approved and funded. The Corps began work for the Veterans Administration February, 1946, after receiving official approval to do so that month. After eight years of work, the Corps completed the program in May 1954. The Corps and its contractors constructed 44 complete hospitals in those years at a cost of \$364,184,828. in A/E and construction expenses. OCE handled the design features while the field handled actual construction. All divisions of the Corps were involved. Within OCE, the Hospital Branch of Construction Operations Division authorized the funds and generally supervised the construction phase and the Projects Control Section of Engineering Division coordinated design, specifications and engineering phases to the actual point of the invitation to bid. Problems with lack of specialized personnel and the necessary decision authority soon led to establishment of the Hospital Design Branch in the Summer of 1947. But the number of Corps employees involved cannot be readily determined.

<u>VAMC Location</u>	<u>Nominal Bed Size and Type</u>	<u>Date</u>
Albany, NY	1000 General Medical (GM)	1951
Altoona, PA	220 GM	1950
Baltimore Lock Raven), MD	300 Tuberculosis (TB)	1952
Beckley, WV	200 GM	1950
Big Spring, TX	250 GM	1950
Birmingham, AL	500 GM	1949
Bonham, TX	300 Domiciliary (Dom), 50 GM	1951
Boston, MA	1000 GM	1952
Buffalo, NY	1000 GM	1950
Clarksburg, WV	200 GM	1950
Durham, NC	500 GM	1953

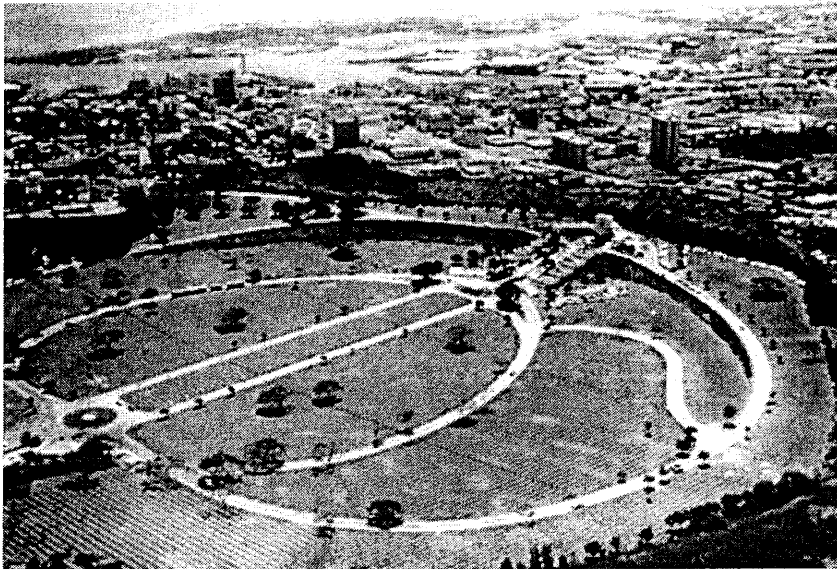
East Orange, NJ	1000 GM	1952
Erie, PA	200 GM	1951
Fort Hamilton (Brooklyn), NY	1000 GM	1949
Fort Wayne, IN	200 GM	1950
Fresno, CA	250 GM	1950
Grand Island, NE	200 GM	1951
Grand Junction, CO*	152 GM	1947
Iowa City, IA	500 GM	1952
Iron Mountain, MI	250 GM	1948
Jefferson Barracks, MO	544 Neuropsychiatric (NP)	
Kansas City, MO	500 GM	1952
Little Rock, AR	500 GM	1950
Madison, WI	500 TB	1951
Manchester, NH	150 GM	1950
Miles City, MT	100 GM	1951
Minot, ND* & **	162 GM	1950
New Orleans, LA	500 GM	1952
New York, NY	1250 GM	1954
Omaha, NE	500 GM	1950
Montrose (Peekskill), NY*	1984 NP	1950
Phoenix, AZ	200 GM	1951
Pittsburgh, PA	1000 NP	1954
Pittsburgh, PA	750 GM	1953
Poplar Bluff, MO	200 GM	1951
Providence, RI*	418 GM	1949
Salt Lake City, UT	500 NP	1952
Seattle, WA	300 GM	1951
Shreveport, LA	450 GM	1950
Sioux Falls, SD*	283 GM	1948
Spokane, WA	200 GM	1950
West Haven, CT	400 TB, 500 GM	1953
Wilkes-Barre, PA	475 GM	1950
Wilmington, DE	300 GM	1950
* Designed by Veterans Administration		

Hindrances to Contribute to Community Economic Development - Tourism:

With only a few exceptions, VA properties are not good candidates for Community Economic Development or Heritage Tourism.

National Cemeteries Centers:

Tourist Interest Cemeteries: A few of VA's national cemeteries have tourism interest, most principally The National Memorial Cemetery of the Pacific, Honolulu, Hawaii, as it rests in the crater of a dormant volcano, has memorials relating to the World War II, contains famous burials from WWII, and has a fabulous overlook area on the rim of the volcano that overlooks all of downtown Honolulu and Pearl Harbor below.



Like it, others with tourist interest are open and available for visitors, but there is no great effort to attract visitors or tourists. There is no opportunity, nor is there a desire to develop commercial enterprises in VA's cemeteries. To do so would detract from the solemn and sacred nature of them.

More Remote Cemeteries: Many historic VA cemeteries are closed or mostly closed to future burials. Some have been closed for decades, while others still accept reserved burials or spouse burials. Many no longer have any staff on-site, but are maintained by nearby active cemetery staff, nearby medical center staff, or by private contract. Again, visitors are welcome, but unless someone has a respectful reason to be there, people are not encouraged to wander in the cemeteries, in order to deter vandalism.

VA Medical Centers:

Self-contained Campuses: Most VA medical centers are contained campuses within or on the outskirts of larger communities – cities and towns. They are typically fenced and now, more and more, manned with security measures, that discourage free interaction with the community.

Security: VA management does not typically seek to bring unnecessary visitors on to the campus. Staff, patients, and patient visitors are welcome, in addition to vendors providing services and support. VA does not typically produce events designed to bring the public on to the facility grounds. When there is an event, it is well controlled. A few medical centers have developed Museums or other historical displays, of which they are rightly proud. They welcome interested visitors who learn about their displays, but do not actively seek "tourists" or ever envision becoming a tourist destination. Flocking tourists would not be proper in a medical healing environment.

Budgets: VA does not have discretionary funds to assist with community development outside of VA programs. Funds are channeled to the primary mission of medical care for veterans.

Bottom Line:

VA does not encourage visitors on campuses, cemeteries or medical centers, unless they are there to receive services or for legitimate visits (graves, patients). In today's scenario, security is becoming a major, over-riding concern and future planning may inhibit random community visitors from the campuses. This will only continue to hinder any potential community economic development.

Programs and Policies to Promote Preservation Partnerships:

American Veterans Heritage Center:

VA has established a collaborative relationship with a non-profit group, the American Veterans Heritage Center, advocating the preservation of first, the Dayton VA medical center as a former branch of the NHDVS, the other ten NHDVS branches and ultimately, all historic properties in VA stewardship.

Interagency Agreement with the National Park Service

We have obtained the Secretary's signature on an Interagency Agreement between VA & The National Park Service for a Landmark Study in which:

- National Park Service agrees to conduct National Landmark Study of the eleven VA properties - former branches of the National Home for Disabled Volunteer Soldiers
- VA obtains Benefits:
 - Formalizes a beneficial relationship – with long-term potential.
 - Public relations benefits
 - Increases knowledge of property; assists in management decisionmaking
 - No cost to VA (NPS staff travel is subsidized by the American Veterans Heritage Center)

National Preservation Stakeholders Agreement on CARES:

VA has drafted a Memorandum of Understanding (MOU) with preservation stakeholders for integrating the Secretary's CARES Decisions (pending policy decisions). This document will be developed further and used as a tool to network with these organizations, such as the National Trust for Historic Preservation, National Conference of State Historic Preservation Officers, and the Advisory Council on Historic Preservation.

Enhanced Use Lease Program

Enhanced Use Lease Program IS a program of partnerships and represents the best opportunities for revitalizing and reusing historic buildings or properties that are currently or projected to be vacant or under-utilized. More about the program:

VA's Enhanced-Use Leasing authority is the Department's unique asset management program. The program provides VA with a proven method of leveraging VA's diverse real estate portfolio and market position to:

- Realign under-performing property to produce assets capable of yielding "highest and best" return to veterans, taxpayers, and the Government
- Implement business goals and objectives

VA land and buildings traditionally have been acquired and managed as operating overhead burdening the bottom line. In contrast, Enhanced-Use program and products are designed to allow VA activities to:

- Manage and develop VA property holdings as a portfolio of assets
- *Generate local revenue*, maximize value, minimize costs, and maintain competitiveness
- Provide security needed to attract outside investments
- *Realign under-used property* to increase operational returns without going through complex and time consuming "excess" property regulations and procedures
- Acquire needed facilities, space, or services otherwise unaffordable or unavailable
- Link real estate activities to strategic goals

The program, initially authorized in 1991 (38 U.S.C. 8161, et seq.), was recently modified and re-authorized until 2011. Initial results include significant cost savings, substantial private investment, new long-term sources of revenues as well as jobs or tax revenues for the local, state, and Federal sectors.

Review of Policies and Procedures for compliance with Section 110 and 111:

VA has a master policy, Directive 7545, that mandates compliance with all Federal preservation requirements, establishes responsibilities, directs each affected program and facility to have a trained "cultural resources management officer" who is in a position to influence decision-making about the resource and to develop a preservation plan for the facility or program. The goal is to decentralize the preservation process and accountability as well as infuse preservation into the local facility's management culture.

This policy was modeled after a draft policy developed by a consultant to the Department of Defense's Legacy Program in the early 1990's. The companion Handbook 7545, Cultural Resource Management Procedures, gives details on how to implement the policy, basically how to comply with the National Historic Preservation Act and implementing regulations, but a whole host of other statutes, as well. The Appendices provide sample documents for assistance. A re-look at these documents shows that in effect, the policies are fine.

The one piece missing is the accountability. There is no mechanism for the Federal Preservation Officer, or anyone else, to ensure that the facilities and program offices are complying with the Directive. There are no reporting processes or approval process.

Plans are underway to improve accountability. Amendments to the Directive, as well as separate orders, will require facilities to report on who their CRMO official is, the training received, to communicate with headquarters more frequently, to submit an annual report on Section 106 and other compliance activities, and to develop and share their preservation plan, which will be further defined.

Qualifications of Staff:

Dennis "Max" Lewis

Senior Preservation Official

Currently: Assistant Deputy Under Secretary for Operations and Management

Former director of the Hines VA medical center; long career with VA; background in engineering.

Karen Ronne Tupek

Federal Preservation Officer (Title outside of VA)

Historic Preservation Officer (Title inside VA)

Architect

Karen Ronne Tupek, an architectural graduate of Washington University in St. Louis, is the Department of Veterans Affairs' Historic Preservation Officer, located within the Veterans Health Administration's Office of Facilities Management.

In her thirty year career with VA, Karen has spent 22 years in the preservation office, learning preservation from the ground - up, before there were formal university programs. She also worked with medical facility design, handicapped accessibility issues, and state owned veterans nursing homes. Through government sponsored classes, seminars, preservation officer meetings, and conferences, she has been involved with and informed about the evolving field of preservation and cultural resource manage. As the VA's preservation advocate, she has been closely involved in every aspect of the program in the facilities arena: identifying, evaluating and nominating eligible VA properties to the National Register of Historic Places; directing specific design details on construction projects, to contracting archeologists; writing and reviewing historic assessments; directing compliance with Section 106 and writing agreement documents; providing training on preservation requirements to field and central personnel; lecturing on VA history; and writing VA-wide policy.

Karen has designed the VA's preservation website, as well as several historic and architectural exhibits, including a section of the National Veterans Museum in New York, one on geography for the Society of Woman Geographers, as well as given many talks on handicapped accessibility, cultural resource management, preservation design, and VA history and architecture. She served on the Task Force to design and create a new National Veterans Museum in downtown Washington.

Steve Kuper

Program Analyst

Involved in various aspects of construction, facilities management, and budgeting programs for VA for many years. Most recently, Steve served on the team developing CARES, so he is instrumental in working with projects to ensure they incorporate and comply with preservation requirements and goals.

Capital Asset Managers for each VISN. They have been trained on basic preservation considerations and requirements as well as how to comply with Section 106. They will have some responsibility for ensuring projects within their VISN are in compliance with preservation requirements. Further, more in depth training would be encouraged.

NAME	VISN	ADDRESS	CITY	STATE	ZIP	PHONE
Steve Mamis	1	200 Springs Rd. Bldg. 61	Bedford	MA	1730	781-687-3425
Donna Dardaris	2	113 Holland Ave.	Albany	NY	12208	518-626-7303
Perry Danner	3	423 East 23rd St.	New York	NY	10010	212-951-3315
Joe Delanko	4	135 East 38th Street (03C)	Erie	PA	16504	814-860-2094
Abdul Razak	5	849 International Dr.	Linthicum	MD	21090	410-691-6341

Mark G. Hall	6	300 W. Morgan St. Suit 1402	Durham	NC	27701	919-956-5541
Jeff White	7	3701 Loop Rd.	Tuscaloosa	AL	35404	205-554-3826
Steve Komara	8	10,000 Bay Pines Blvd. B. 24	Bay Pines	FL	33744	727-319-1299
Vicky Kruse	9	1030 Jefferson Ave.	Memphis	TN	38104	901-577-7225
Ronald Stertzbach	10	1540 Spring Valley Dr.	Huntington	WV	25704	304-429-6755
Ted Deakin	11	PO BOX 134002	Ann Arbor	MI	48113	734-930-5947
William Spaar	12	5th & Roosevelt	Hines	IL	60141	708-202-2879
Carlos Escobar	15	1201 Walnut St.	Kansas City	MO	64106	816-701-3026
Cynthia Jwainat	16	1600 E Woodrow Wilson	Jackson	MS	39216	601-364-7939
Don Wilson	17	2301 E. Lamar Blvd. Suit 650	Arlington	TX	76006	817-385-3774
James Moule	18	6950 East Williams Field Rd.	Mesa	AZ	85212	602-222-2694
Steven Crump	19	500 Foothill Dr.	Salt Lake City	UT	84148	801-582-1565
Anne-Marie Naficy	20	3710 SW US Veterans Hospital Rd.	Portland	OR	97239	503-220-8262
Larry Janes	21	201 Walnut Ave	Mare Island	CA	94592	707-562-8213
Peter Verdoljak	22	5901 East 7th St.	Long Beach	CA	90822	562-826-5857
Peter Yakowicz	23	One Veterans Dr.	Minneapolis	MN	55417	700-780-2656

Up to 75 staff with collateral title of "Cultural Resource Management Officer" at most historic medical center facilities. They are primarily located in the Engineering Offices and have preservation only as a collateral duty.

Future Planning

'As Stewards of many historic treasures VA is responsible for ensuring that the most important ones are there for future generations'

- CARES Report

Historic Preservation Program's Accomplishments – Last 6 Months:

- Met with National Preservation Stakeholders for Future Policy Guidance
- Drafted a Memorandum of Understanding (MOU) with preservation stakeholders for integrating the Secretary's CARES Decisions (pending policy decisions)
- Trained Capital Asset Managers, at field locations, in what is required for projects and sites that have historic properties or buildings
- Developed a comprehensive list of properties most affected by CARES
- Responded to need for a historic preservation succession plan by bringing in new staff to train and assist with the program
- Obtained Secretary's signature on an Interagency Agreement between VA & The National Park Service – Landmark Study

Planned Future Actions:

Establish a National Advisory Board for Historic Preservation:

Address the need for obtaining support for decisions made in the Historic Preservation Program by establishing a National Advisory Board

Invite participation from VA's trunk organizations; VSO's, National Preservation Groups and partner with other Government Agencies:

- National Trust for Historic Preservation
- Advisory Council on Historic Preservation
- National Conference of State Historic Preservation Officers
- Paralyzed Veterans of America (interested)
- Department of Housing and Urban Development (offered assistance)
- National Park Service

Establish a National Advisory VA Task Force for Historic Preservation:

Address the need for coordinating efforts to implement actions across VA offices in the Historic Preservation Program by establishing a National Task Force –

Invite participation from VA's trunk organizations;

- Veterans Health Administration
- Veterans Benefits Administration
- National Cemetery Administration
- Management and Policy Offices

- Public Affairs
- Congressional Affairs

Identify need for Revolving Fund for Preservation

- Fund for Preservation Projects Alone
- Fund for National Study of Historic Properties
- Education and Training – reinforce and supplement

Develop a Strategic Vision to Address CARES Recommendations

Address implementing a vision that recognizes the important properties and buildings in VA's capital inventory

Use a mix of internal and external resources to study the important sites to invest in; and

Evaluate the list of "Hot Historic Properties from CARES" based on the results of CARES and include input from other studies, organizations to refine the list into a national priority one.

Consider using consultants to objectively validate the list. Use the following list as a baseline (addressed during CARES PHASE 2)

Develop inventory of excess historic buildings based on approval of CARES report. There were 173 buildings identified (**See Appendix B**)

Incorporate "Section 106" compliance (consultation and negotiations with preservation stakeholders) requirements into implementation plans

Actively seek "preservation stakeholder" assistance to find uses for excess historic buildings or agree on disposition: Work with the following preservation and veterans stakeholders:

VHA Historic Assets for VISN 1

(Buildings Only)

Building #	Building Use or Occupancy	Date Built
Bedford		
1	Administration Bld	1928
2	Patient Care Bld	1928
3	Dietetics Kitchen/IRM/Phone	1928
4	Nursing Home	1929
5	Research/Vacant	1932
6	Patient Care Bld	1937
7	Patient Care Bld/Domiciliary	1937
8	CMOP/DSS	1930
9	Administration Bld	1928
10	Library	1928
12	Office Bld	1928
13	Housekeeping Quarters	1928
14	Housekeeping Quarters	1930
15	Housekeeping Quarters	1930
16	Housekeeping Quarters	1928
17	Research Bld	1930
18	Grecc Research	1928
19	Laundry/Storage	1928
22	Boilerplant	1928
23	Guard house	1928
27	Electric Switchgear	1928
28	Storage	1928
29	Research Storage	1928
30	Pumphouse	1933
32	Garage	1929
33	Fiscal Bld	1930
35	Greenhouse	1929
39	Bathrooms	1929
49	Barn	1896
61	Administrative Bldg.	1939
62	Patient Care Bld	1939
70	HSR&D	1946

Total for Bedford: 32

BHS, West Roxbury

1	Patient Care	1943
8	Boiler Plant	1943

Total for BHS, West Roxbury: 2

Manchester

11	Smyth Tower- Historic Landmark	1888
----	--------------------------------	------

Total for Manchester: 1

Building #	Building Use or Occupancy	Date Built
Northampton		
1	Main Hospital	1923
2	IRM	1923
3	Administration	1923
4	Ward	1923
5	Main Kitchen	1923
6	Homeless Shelter	1926
7	Ward	1923
8	Ward	1923
9	Ward	1923
11	Recreation Hall	1926
12	Administration	1923
13	Garage	1923
14	Laundry	1925
15	Boiler Plant	1923
16	Warehouse	1923
17	Housekeeping Quarters	1923
18	Housekeeping Quarters	1923
19	Housekeeping Quarters	1923
20	Administration	1923
21	Housekeeping Quarters	1923
22	Housekeeping Quarters	1923
23	Housekeeping Quarters	1923
25	Multi-Use	1930
26	Homeless Shelter	1937

Total for Northampton: 24

Togus

1	Housekeeping Qtrs	1869
2	Housekeeping Qtrs	1901
3	Housekeeping Duplex	1893
4	Housekeeping Duplex	1890
15	Housekeeping Qtrs Single	1900
16	Housekeeping Qtrs Single	1900
17	Housekeeping Qtrs Single	1900
18	Housekeeping Qtrs Single	1896
19	Housekeeping Qtrs Single	1896
20	Housekeeping Qtrs Single	1896
21	Storage Barn	1887
27	Housekeeping Qtrs Single	1899
32	Housekeeping Qtrs Single	1910
33	Housekeeping Qtrs Single	1910
34	Housekeeping Qtrs Single	1910

VHA Historic Assets for VISN 1

(Buildings Only)

Building #	Building Use or Occupancy	Date Built
36	Grounds Unit	1909
67	SPD Storage	1891
69	Resident's Quarters	1878
200	Gm & S Hosp.	1933
211	Fire Station	1935

Total for Togus: 20

VACHS, Newington

1	Outpatient	1930
2C	Outpatient Psych	1930
3	Boiler Plant & Fms	1930
4	Out-Lease	1932
5	Research	1930
6	Quarters	1930
7	Quarters	1932
8	Quarters	1933
12	A&Mm, Warehouse & Vet. Ind.	1931

Total for VACHS, Newington: 9

White River Junction

1	Clinical Bldg. (formerly Main Hospital)	1938
2	Boiler Plant/Warehouse	1938
4	National PTSD	1939
6	A&MM Admin. (formerly Duplex Quarters)	1942
7	Fiscal Service (formerly Director's Quarters)	1942
8	Out-Pat. Psych.	1939
9	Daycare Center	1939
10	Grds/Transportation	1940
19	Storage	1942

Total for White River Junction: 9

97 Historic Assets in VISN 1

VHA Historic Assets for VISN 2

(Buildings Only)

Building #	Building Use or Occupancy	Date Built
Batavia		
1	Main Hospital	1932
2	Kitchen	1932
3	Administration	1939
4	Recreation	1932
5	Mental Health (Quarters)	1932
6	Quarters (former Director's)	1932
7a	Quarters	1932
8a	Quarters	1932
9	Laundry	1932
10	Warehouse	1932
11	Boiler	1932
12	Electrical	1932
13	Garage	1932
15	Incinerator	1932
17	Sewage Pump House	1932
19	Garage	1934
20	Maintenance	1935

Total for Batavia: 17

Bath

3	Equipment Storage	1877
6	Garage	1910
9	Administrative Offices	1877
10	Quarters	1889
14	Fire Department/Garage	1887
15	Maintenance & Repair	1887
16	Carpenter Shop	1887
17	Linen Holding	1887
18	Credit Union	1880
20	Pump House	1935
24	Nutrition & Food Service	1895
28	Engineering Storage	1887
29	Upholstery Shop (former Dom)	1880
30	Administration (former Domiciliary)	1880
31	Boiler Plant/Tech Med Shop	1887
32	Administrative Offices	1887
33	Administration	1877
34	Domiciliary	1877
35	Voluntary/Canteen	1877
38	Administrative Offices (Single Quarters)	1887
39	Chapel	1880
41	Administrative Offices	1880

Building #	Building Use or Occupancy	Date Built
42	Museum	1900
44	Administrative Offices	1888
50	Quarters	1887
51	Quarters	1887
52	Quarters	1887
53	Garage	1887
54	Quarters	1887
55	Quarters	1887
56	Quarters	1887
57	Garage	1887
75	Engineering Shops	1934
76	Hospital	1938
78	Nursing Home Care Unit	1939

Total for Bath: 35

Canandaigua

CC	Connecting Corridors	1931
1	Main Medical Center Building	1932
2	Dietetic/Dining Building	1932
3	Inpatient Psychiatry	1932
4	Canteen/Education	1932
5	Recreation Building	1932
6	SubsAbuse Clinic	1937
7	Nursing Home	1937
8	Nursing Home	1937
9	PRRTP Beds	1937
10	Laundry	1932
11	Warehouse	1932
12	Boiler Plant	1932
14	Attendants Quarters	1932
16	Fire House/Grounds/Transportation	1932
18	Halfway House	1890
20	Single Quarters	1890
24	Housekeeping Quarters	1890
33	Nursing Home	1943
34	Daycare/VISN Storage	1944
36	MHC/Vacant Ward	1944
37	IRM/Vacant Wards	1944
40	Gate House	1936
48	Garage/Storage	1931
70	Storage	1880
73	Single Quarters	1910
75	Oil House	1936
76	Storage	1890

VHA Historic Assets for VISN 2

(Buildings Only)

Building #	Building Use or Occupancy	Date Built
77	Storage	1900
94	Personnel Garage	1947
Total for Canandaigua: 30		

Building #	Building Use or Occupancy	Date Built
------------	---------------------------	------------

82 Historic Assets in VISN 2

VHA Historic Assets for VISN 3

(Buildings Only)

Building #	Building Use or Occupancy	Date Built
Bronx		
107	Chapel/Oupatient Mental Health	1923
Total for Bronx: 1		
Lyons		
1	Lab/Radiology, Clinics, Admin.	1929
2	PM&RS, Pathology	1930
4	Outpatient Clinics, Acute Care	1930
5	Auditorium, MAS, Recreation	1930
6	Dental, Canteen Svc.	1930
7	Geriatrics, GEM, Nursing	1939
8	Mental Health, BioMedical, EMS	1930
9	EMS, Patient Records	1930
10	Administrative	1930
11	Administrative	1930
16	Administrative, Daycare	1930
18	Quarters	1930
19	Quarters	1930
25	Quarters	1930
26	Quarters	1930
53	Psychiatric	1940
54	Dietetics Office, Main Kitchen	1940
55	Vacant Dom	1940
57	Domiciliary	1946
Total for Lyons: 19		
Montrose		
1	Administration	1947
2	Theater	1947
3	Clinical	1947
4	Pharmacy/Vacant	1947
5	Kitchen & Dining Hall	1947
6	Nursing Home Care Unit	1947
7	Storage/Vacant	1947
8	Vacant Admin/Lab	1947
9	Vacant NHCU	1947
10	Vacant NHCU	1947
11	Vacant SAC	1947
12	Administration/Inpatient/Outpatient	1947
13	Domiciliary	1947
14	Psychiatry	1947
15	Psychiatry	1947
16	Engineering/Rehab	1947
17	Warehouse	1947

Building #	Building Use or Occupancy	Date Built
18	Laundry	1947
19	Fire House / Grounds & Transp't'n	1947
20	Boiler Plant	1947
25	Recreation & Canteen	1947
27	Chapel	1947
28	Domiciliary	1947
29	Quarters	1947
31	Director's Quarters	1947
39	Greenhouse	1947
Total for Montrose: 26		

Northport

1	Vacant	1927
2	Vacant	1927
5	Education	1927
6	Clin/Adm Offices	1927
7	Offices	1931
8	Nursing Home Units	1931
9	Offices	1931
10	Admin. Offices	1927
11	Homeless Residence	1927
12	Media & Library	1927
17	Non-Housekeeping	1927
18	Vacant	1927
20	Non-Housekeeping	1927
23	Vacant	1927
25	Quarters	1927
26	Quarters	1932
27	Quarters	1927
28	Gatehouse	1927
37	Employee Educ Svc	1931
61	Research	1937
62	Research	1937
63	Mental Hlth. OPT	1937
64	Mental Health	1937
65	Mental Hlth.	1937

Total for Northport: 24

70 Historic Assets in VISN 3

VHA Historic Assets for VISN 4

(Buildings Only)

Building #	Building Use or Occupancy	Date Built
Coatesville		
1	Administration/Clinical	1930
2	Outpatient	1930
3	Logistics	1930
4	Support/Outleased	1930
5	Great Hall/Administration	1930
6	Support/Outleased	1932
7	Domiciliary	1933
8	Domiciliary	1932
9	Vacant/Canteen	1932
10	Domiciliary	1930
11	Research	1932
12	Engineering	1930
13	Warehouse	1930
14	Boiler Plant	1930
15	Laundry	1930
16	Administration	1930
18	Hoptel	1930
19	EMS/vacant	1930
26	Administration	1930
27	Vol/Vacant	1932
28	Administration/Vacant	1932
38	Administration	1936
39	Inpatient/Mental Health (SATU)	1936
40	Gardeners Tool Shed	1937
57	NHCU	1944
58	Inpatient/Mental HealthBehaviorial Medicine	1945
59	Inpatient/Mental Health/NHCU	1945
Total for Coatesville: 27		

Lebanon

1	General Medical and Surgical	1947
2	Office/Shop/Training	1947
3	Day Care/Emergency Quarters	1946
4	Housekeeping Quarters	1950
5	Housekeeping Quarters	1950
6	Warehouse	1946
8	Motor Pool Garage	1946
9	Utility Shops	1946
17	Ambulatory Care	1950
18	Continued Treatment	1950
19	Nursing Home	1950

Building #	Building Use or Occupancy	Date Built
22	Education/Library/Informatics	1950
25	Housekeeping Quarters	1950
26	Non-Housekeeping Qtrs.	1950
27	Office	1950
100	CWTTR House	1835
103	Golf Course Club House	1831

Total for Lebanon: 17

Pittsburgh, Aspinwall

7	Recreation	1925
8	Vacant - proposed demolition	1925
10	Duplex quarter's	1925
11	Duplex quarter's	1925
13	Patriot House (liver patients)	1925
15	Apartments	1929
16	Duplex Apartment	1929
17	Engineering	1929
20	Duplex quarter's	1932
21	Outlease - IG	1932
23	Vacant - proposed demolition	1932
25	Guardhouse	1926
32	VISN & Director (Administration)	1932

Total for Pittsburgh, Aspinwall: 13

57 Historic Assets in VISN 4

VHA Historic Assets for VISN 5

(Buildings Only)

Building #	Building Use or Occupancy	Date Built
Fort Howard CBOC		
3	Duplex Housekeeping Quarters	1900
5	Single Housekeeping Quarters	1900
6	Single Housekeeping Quarters	1900
8	Office	1901
9	Single Housekeeping Quarters	1900
10	Patient Lodging (Single Quarters)	1900
11	Single Housekeeping Quarters	1900
12	Single Housekeeping Quarters	1900
13	Single Housekeeping Quarters	1900
14	Single Housekeeping Quarters	1900
15	Engineering Shops	1898
16	Engineering Storage	1898
37	A&MM Office/Warehouse	1903
43	Vacant (Storage)	1903
44	Storage	1903
51	SARRTP (vacant)	1932
57A	Patient Lodging	1932
57B	vacant (Duplex Quarters)	1932
59	Duplex Housekeeping Quarters	1932
61	Office (Non-Housekeeping Quarters)	1903
63	Canteen	1910
64	Non-Housekeeping Quarters/Office	1910
68	Engineering	1910
70	Storage	1910
156	Engineering Grounds/Maint. Storage	1910
174	Old Theater/EMS Storage	1932
225	Main Hospital	1943
237	East Connecting Corridor	1947
239	West Connecting Corridor	1947

Total for Fort Howard CBOC: 29

Martinsburg

117	Chapel	1943
-----	--------	------

Total for Martinsburg: 1

Perry Point

1	Hospital Wards	1921
2	Hospital Wards	1921
3	Hospital Wards	1921
4	RESEARCH	1918
5	PUBLIC HEALTH SERVICE	1921
6	Director's Office	1922
8	Engineering Storage	1918

Building #	Building Use or Occupancy	Date Built
9	Hospital Wards	1924
10	Engineering Storage	1918
11	WAREHOUSE	1918
13	PUBLIC HEALTH SERVICE	1922
14	PUBLIC HEALTH SERVICE	1935
15	ADMINISTRATION	1918
17	Canteen/Dietetic Services	1926
19	Hospital Wards	1931
20	Water Pumping Station	1918
22	Filter Plant	1942
23	Hospital Wards	1942
24	Supply Storage	1918
25	Hospital Wards	1947
32	Valve House	1918
33	ANIMAL LAB	1918
59	US POST OFFICE	1918
64	PM&R	1921
80	MENTAL HEALTH CLINIC	1932
82	EDUCATION/RESEARCH	1932
97	GATE HOUSE	1937
501	Director's Quarters (MANSION)	1750
504	OLD MILL	1735

Total for Perry Point: 29

59 Historic Assets in VISN 5

VHA Historic Assets for VISN 6

(Buildings Only)

Building #	Building Use or Occupancy	Date Built
Asheville		
2	Vacant Apartment	1927
3	Apartments, 2 Units	1927
4	Apartments, 2 Units	1927
5	Apartments, 2 Units	1927
6	Apartments, 4 Units	1929
7	Apartments, 4 Units	1929
9	Old Nurses Quarters, Vacant	1929
15	Clinics & Administration	1933
27	Garage, Quarters 2	1936
28	Garage, 2-Car for Bldg. 3	1936
29	Garage, 2-Car for Bldg. 4	1936
30	Garage, 2-Car for Bldg. 5	1936
31	Garage, 8-Car for Bldgs. 6 & 7	1936

Total for Asheville: 13

Fayetteville, NC

1	Main Hospital (Medical & Admin)	1939
3	Dietetics/Warehouse/RMS	1939
4	HRMS/Student Qtrs.	1939
5	Facilities Mgmt/ORM	1939
7	Education	1939
8	Business Office	1939
9	Engineering Shops/Garages	1939
10	Laundry Plant	1939
11	Boiler Plant	1939
15	Garage (Quarters)	1939
16	Garage	1939
18	Garage	1939
30	Quonset Hut Storage Building	1959

Total for Fayetteville, NC: 13

Hampton

6	Quarters	1887
13	Linen Sorting / Storage	1889
15	Boiler Plant	1909
16	Grounds Shop	1887
17	Canteen	1887
18	Storage	1887
27	Warehouse	1901
28	Engineering Shop	1909
31	Engineering Shop	1912
33	National Chaplain HQ	1882
35	Post Office / Police / Engineering	1850

Building #	Building Use or Occupancy	Date Built
36	Engineering Svc. / Security Svc.	1850
37	Security Svc. (Fire Dept.)	1895
43	IRM	1912
48	Chapel	1910
50	Resident Engineer / Storage	1912
52	Salvation Army	1912
61	Grounds & Transportation Shop	1887
66	Outpatient / Administrative	1910
69	Voluntary / Recreation / Storage	1908
70	Psychology / ARU / Unions	1908
71	CWT	1908
72	Research	1908
83	Audio Visual Training Center (Veterans' Hall)	1930
95	Paint Storage	1934
110	Main Hospital	1937
114	Palliative Care / Administrative (Quarters)	1940
115	National Chaplain's Training School (Dplx Qtrs)	1939
124	Garage to Quarters 6	1956

Total for Hampton: 29

Salem

1	Administration	1934
2	NHCU/Dental/Nuclear Medicine	1933
4	N&F Service/Canteen/Med Media	1934
5	Education/Recreation	1934
7	Psych Units/Social Work Off	1933
8	Acute Psych Units/Bio Med Shop	1938
9	Psych Unit/PTSD Unit/Psychol Off	1941
10	Centralized Resource Support	1940
11	Outpatient Psychiatry/Psych Off	1938
12	R&D/AFGE/Outpatient/Support Space	1936
13	Boiler Plant	1933
14	Laundry	1933
15	Laundry/CWT/Storage	1933
16	Engineering Offices/Garage	1933
17	Outleased/VSOs	1933
18	Quarters	1933
19	Quarters	1933
23	Pump House	1933
25	Quarters (Mount Airy Estate House)	1885
26	Garage	1937

VHA Historic Assets for VISN 6

(Buildings Only)

Building #	Building Use or Occupancy	Date Built
27	Garage	1937
28	Garage	1937
74	Administration	1944
75	Vacant/PM&RMS Clinics	1944
76	Eng Shops/Adult Day Care/Homeless	1944
77	Child Care Ctr./EMS/Student Qtrs.	1944

Total for Salem: 26

Building #	Building Use or Occupancy	Date Built
------------	---------------------------	------------

81 Historic Assets in VISN 6

VHA Historic Assets for VISN 7

(Buildings Only)

Building #	Building Use or Occupancy	Date Built
Augusta, Uptown		
7	Engineering Storage	1923
14	Engineering Shops	1923
18	Administrative	1913
19	Administrative	1913
20	Administrative	1913
29	Quarters	1927
30	Quarters	1927
31	Quarters	1927
32	Quarters	1931
33	Quarters	1931
76	Shops/Storage	1945

Total for Augusta, Uptown: 11

CAVHCS, Montgomer

1	Main Building	1939
4	Main Building	1939
6	A&MM Administration	1939
7	Eng, Fiscal, A&MM, Env. Mgt	1939
8	VHA Administration	1939
12	A&MM Warehouse	1939
13	Engineering Shops	1939
14	Boiler Plant	1939

Total for CAVHCS, Montgomery: 8

CAVHCS, Tuskegee

1	Human Resources	1923
2	Diagnostics Services	1923
3	Clinical Services	1923
3A	Clinical Services	1952
4A	Mental Health	1923
4	Clinical/Admin.	1923
5	Kitchen	1923
7	Vacant	1923
8	Vacant	1923
9	Vacant (Nursing Education, THAEC & Engineering)	1923
10	Vacant (Financial Mgmt. & Logistics)	1923
12	Boiler Plant	1923
13	Engineering Shops	1923
14	Engineering Shops	1923
15	Fire Department	1923
18	Vacant (Police and Security)	1923
19	Vacant	1923

Building #	Building Use or Occupancy	Date Built
20	Vacant (Housekeeping Quarters)	1923
21	Vacant (Housekeeping Quarters)	1923
22	Vacant (Cottage - Housekeeping Quarters)	1923
23	Vacant (Cottage - Housekeeping Quarters)	1923
24	Vacant (Housekeeping Quarters)	1923
25	Vacant (Housekeeping Quarters)	1923
26	Vacant (Housekeeping Quarters)	1923
27	Vacant (Housekeeping Quarters)	1923
28	Vacant (Housekeeping Quarters)	1923
29	Vacant (Housekeeping Quarters)	1923
43	Clorinator House	1928
44	Vacant	1929
50	Vacant	1923
51	Vacant	1932
54	Gas Meter House	1934
59	Personnel Garage	1930
60	Personnel Garage	1930
62	Mental Health/Homeless Dom	1932
63	Vacant	1938
65	Linen	1945
68	Administrative Services	1945
69	Vacant	1945
88	Warehouse	1957

Total for CAVHCS, Tuskegee: 40

Columbia, SC

1	USC Med School (Old Main Hospital)	1932
2	USC Med School	1932
3	USC Med School	1932
4	USC Med School (former Dining, Food Svc Bldg)	1932
5	Auditorium	1932
6	Education (former Laundry)	1932
7	Warehouse	1932
8	Boiler Plant/Incinerator	1932
9	Research	1932
10	Administration	1932
11	Quarters	1932
12	Quarters	1932
13	Quarters	1932
20	Shops/Engineering	1939
22	Administration	1937

VHA Historic Assets for VISN 7

(Buildings Only)

Building #	Building Use or Occupancy	Date Built
------------	---------------------------	------------

Building #	Building Use or Occupancy	Date Built
------------	---------------------------	------------

Total for Columbia, SC: 15

Tuscaloosa

1	Administrative Support	1931
2	Outpatient Care	1931
3	Dining/Kitchen/Boiler/ISS	1931
4	Auditorium	1931
5	Administrative Support	1931
6	Administrative Support	1931
7	Quarters-duplex	1931
8	Quarters	1931
12	Warehouse	1931
15	Quarters-duplex	1933
17	Engineering Shops	1933
18	Laundry	1933
33	Vacant	1939
38	Intermediate/Primary Care/Canteen	1944
39	Indian Rivers	1944
40	OIOFO/Child Care	1944
41	CWT/Grounds/Transportation	1944

Total for Tuscaloosa: 17

91 Historic Assets in VISN 7

VHA Historic Assets for VISN 8

(Buildings Only)

Building #	Building Use or Occupancy	Date Built	Building #	Building Use or Occupancy	Date Built
Bay Pines					
1	PSCHIATRY (former Main Hospital)	1932			
2	ADMINISTRATION SUPPORT	1932			
11	Engineering Storage	1932			
12	Linens/Grounds	1932			
13	LAUNDRY	1933			
17	SHOP STORAGE	1936			
19	Shops/Storage	1934			
20	EDUCATION (former Recreation)	1934			
22	ADMINISTRATION SUPPORT	1938			
24	VISN Offices/Admin	1937			
35	POLICE/SECURITY	1938			
36	Warehouse (former Dining Hall & Kitchen)	1939			
37	PSYCH/SUPPORT	1939			
54	CWT Program (MH&BM)	1932			
Total for Bay Pines: 14					
Miami					
9	ARF Lab	1983			
Total for Miami: 1					

15 Historic Assets in VISN 8

VHA Historic Assets for VISN 9

(Buildings Only)

Building #	Building Use or Occupancy	Date Built	Building #	Building Use or Occupancy	Date Built
Huntington			20	Human Resources/Admin. Space	1904
1	Outpatient/Admin	1932	34	Clock Tower, Museum, VCS, Resear. (Mess Hall)	1902
2	UTILITY SUPPORT	1932	35	EUL - ETSU Theatre	1905
3	BOILER PLANT	1932	36	Morgue	1903
4	CANTEEN, REC. HALL	1935	37	Psychiatry Service	1997
5	VACANT	1932	39	Duplex Quarters	1921
6	VACANT	1932	40	Resident Engineers Office (Duplex Quarters)	1921
7	Student Quarters	1932	41	Engineering Service Administration (Duplex Qtrs)	1921
8	FPMS/AMMS	1932	42	Engineering Project Office (Duplex Quarters)	1921
12	ADMINISTRATION	1932	43	IRM/ Nursing Education (Duplex Quarters)	1921
Total for Huntington: 9			44	Single Quarters	1905
Lexington, Leestown			45	Single Quarters	1905
1	Clinical, Outpatient, Admin.	1930	46	Single Quarters	1905
2	Canteen/Vacant	1931	47	Single Quarters	1905
3	Kitchen, Pharmacy, Warehouse	1931	52	EUL - ETSU	1903
4	Education	1932	53	U.S. Post Office, Mountain Home	1908
5	Administration, Reference Lab	1931	60	EUL - ETSU Warehouse	1905
6	Vacant Quarters-leased office space	1930	69	Psychology, Nursing, Administrative	1903
7	Vacant Quarters-leased office space	1930	Total for Mountain Home: 31		
8	Vacant Quarters-leased office space	1933	Murfreesboro		
12	Warehouse	1931	1	Administration, Medical Wards	1939
16	Nursing Home Care	1937	2	Administration, Kitchen and Dining	1939
17	SAC/Admin	1937	3	Medical and Surgical Wards	1939
25	Vacant Wards (outgranted)	1942	4	Auditorium and Recreation	1942
27	Vacant Wards	1948	5	Medical Wards	1947
28	Vacant Wards	1948	6	Medical Wards	1947
29	Outleased Homeless	1948	7	Psychiatric Wards	1947
Total for Lexington, Leestown: 15			8	Psychiatric Wards	1939
Mountain Home			9	Psychiatric Wards	1939
1	EUL - ETSU	1905	10	Mental Hygiene & Psych. Outp. Clin.	1939
2	EUL - ETSU	1905	11	Halfway House	1939
3	EUL - ETSU	1905	12	Laundry	1939
4	EUL - ETSU Library	1905	13	Engineering Shops	1944
5	EUL - ETSU	1905	14	Laundry	1939
6	EUL - ETSU	1905	15	Fire Dept and Shops	1939
7	EUL - ETSU	1904	16	Boiler Plant	1939
8	A&MM, Fiscal Services, Impact Sp.	1932	18	Quarters	1939
13	Protestant and Catholic Chapels	1905	19	Quarters	1939
15	EUL - ETSU	1904			
16	EUL - ETSU	1908			
17	EUL - ETSU Library	1904			
19	Single Quarters	1904			

VHA Historic Assets for VISN 9

(Buildings Only)

Building #	Building Use or Occupancy	Date Built
------------	---------------------------	------------

Building #	Building Use or Occupancy	Date Built
------------	---------------------------	------------

Total for Murfreesboro: 18

73 Historic Assets in VISN 9

VHA Historic Assets for VISN 10

(Buildings Only)

Building #	Building Use or Occupancy	Date Built
Chillicothe		
1	Vacant Patient Building	1923
2	Offices	1923
4	Vocational School	1923
5	Alvis House	1923
6	Nursing Offices	1923
8	Offices	1923
9	Auditorium	1923
10	Offices	1923
11	Offices	1923
18	Offices	1923
24	SPD/Swing	1929
25	Linen Service	1929
26	Nursing Home Care	1932
27	Admin/HOPTEL	1932
28	Offices/Canteen	1932
29	Quarters	1932
30	Inpatient Medical	1938
31	Outpatient Clinics	1939
35	Inpatient Psych/Dom	1939
60	Conferencing (office space)	1890
210	Clinical/NHCU	1945
211	Clinical/NHCU	1945
212	Child Care/Offices	1945

Total for Chillicothe: 23

Cincinnati, Fort Thom

1	Quarters	1888
2	Quarters	1889
3	Quarters	1889
4	Quarters	1889
5	Quarters	1889
6	Quarters	1890
7	Quarters	1890
8	Quarters	1889
9	Quarters	1889
30	Quarters	1899
31	Quarters	1892
32	Quarters	1892
33	Quarters	1892
34	Quarters	1892
35	Quarters	1892
64	Nursing Home/Domiciliary	1935

Building #	Building Use or Occupancy	Date Built
------------	---------------------------	------------

Total for Cincinnati, Fort Thomas: 16

Cleveland, Brecksville

62	Quarters	1846
----	----------	------

Total for Cleveland, Brecksville: 1

Dayton

101	North Shelter	1868
105	Bus Shelter	1917
116	Union Building	1871
118	Protestant Chapel	1868
119	Catholic Chapel	1898
120	Patient Library	1880
127	Research	1821
129	Security/Eng. Storage	1881
135	Grounds Maintenance	1883
137	Maintenance Garage	1883
138	Eng./A&MMS Storage	1891
210	Duplex Residence	1921
211	Duplex Residence	1921
212	Duplex Residence	1921
213	Duplex Residence	1921
214	Duplex Residence	1921
220	Hospitality House	1885
221	Resident Engineer	1876
225	Liberty House Museum	1875
226	Freedom House/EMS/Education	1872
228	Single Garage	1870
401	Day Care Center (former female quarters)	1899
402	Army Reserve Bldg. (former female quarters)	1900
408	VISN-DSS/CSC/Fitness Center	1903
412	Miami Valley Housing Opportunity	1902

Total for Dayton: 25

65 Historic Assets in VISN 10

VHA Historic Assets for VISN 11

(Buildings Only)

Building #	Building Use or Occupancy	Date Built
Battle Creek		
1	Main Administration	1932
2	Main Clinical Building	1924
3	VALP	1924
4	Inpatient Pharmacy (Parole Building)	1924
6	Recreation Building	1924
7	SPD/Vacant	1938
8	SATU	1924
9	Education & Medical Media	1924
10	Mental Health Clinic	1924
11	Nursing & IRM	1924
12	Special Psychiatric	1924
13	ChalleNGe	1940
14	Acute Psychiatric	1940
16	Rental Quarters	1924
17	Rental Quarters	1924
18	Rental Quarters	1924
19	Rental Quarters	1924
20	Rental Quarters	1924
21D	Director's Quarters	1924
22	ChalleNGe Program	1924
24	Engineering, Ems, & Protective Svc	1924
39	Acute Intensive Psychiatry	1931
82	Continued Treatment	1944
83	NHCU	1947
84	NHCU	1947

Total for Battle Creek: 25

Danville

11	EUL - Senior Housing	1900
12	EUL - Senior Housing	1900
13	EUL - Senior Housing	1900
14	Fiscal/HRMS/Research	1900
19	Warehouse	1900
22	Laundry	1900
25	Greenhouse	1901
26	Garage (Engineering)	1900
30	Service Building	1922
31	Quarters	1899
32	Quarters	1900
33	Quarters	1899
34	Quarters	1901
35	Quarters	1901

Building #	Building Use or Occupancy	Date Built
37	Quarters	1901
38	Quarters	1901
39	Duplex Quarters	1925
40	Quarters	1880
41	Duplex Quarters	1925
48	Historic Carnegie Bldg. (vacant)	1907
49	Chapel	1901
58	Inpatient Med/Surg	1934
60	Child Care Center	1935
61	Garage (1 car)	1938
62	Garage (1 car - storage)	1938
64	Engineering	1938
66	Barn - Engineering storage	1937
67	Implement shed	1939
69	Laundry	1938
72	Engineering	1940
74	Garage (1 car)	1938
75	Garage (1 car)	1938
77	Garage (2 car)	1938
78	Garage (2 car)	1938
79	RMS - shops and storage	1938
80	Garage (RMS storage)	1938
81	Garage (2 car)	1938
82	Garage (2 car)	1938
83	Garage (2 car)	1938
84	Recreation Pavilion	1937

Total for Danville: 40

Indianapolis, CSR

1	EUL - LaRue Carter Hospital	1931
2	EUL - LaRue Carter Hospital	1931
3	Storage	1931
4	Quarters	1937
7	CWT/Quarters	1931
8	EUL - LaRue Carter Hospital	1939
9	Quarters	1931
10	Storage	1938
11	Storage	1941
15	EUL - LaRue Carter Hospital	1933
18	Storage	1935
20	Storage	1934
22	EUL - LaRue Carter Hospital	1936
24	EUL - LaRue Carter Hospital	
30	EUL - LaRue Carter Hospital	1934

VHA Historic Assets for VISN 11

(Buildings Only)

Building #	Building Use or Occupancy	Date Built
33	Warehouse/Storage	1934
36	EUL - LaRue Carter Hospital	1934
39	EUL - LaRue Carter Hospital	1934
Total for Indianapolis, CSR: 18		

NIHCS, Marion

1	VACANT (Ward Building)	1889
2	ADMINISTRATION	1889
3	VACANT (Ward Building)	1889
4	VACANT (Ward Building)	1889
5	NURSING EDUCATION	1889
6	ADMINISTRATION	1889
7	VACANT (Ward Building)	1893
8	GYMNASIUM	1924
9	PRINT SHOP/MAIL ROOM	1923
10	VACANT (Ward Building)	1898
11	VACANT (Ward Building)	1898
12	PATIENT	1898
13	VACANT (Nursing Ed. & Med. Library)	1899
15	PATIENT	1929
16	PATIENT	1929
17	PATIENT	1929
18	VACANT (Ward Building)	1896
19	VACANT (Admin. Bldg., Credit Union)	1890
20	VACANT (Administration Building)	1890
21	VACANT	1890
22	VACANT	1890
24	VACANT (Ward Building)	1896
25	VACANT (Ward Building)	1930
26	QUARTERS	1923
27	QUARTERS	1921
28	QUARTERS	1921
29	QUARTERS	1921
30	QUARTERS	1921
31	QUARTERS	1921
32	QUARTERS	1897
33	QUARTERS	1896
34	QUARTERS (Director)	1896
35	QUARTERS	1908
36	QUARTERS	1903
37	QUARTERS	1916
38	QUARTERS	1904
41	TRANSPORTATION	1895

Building #	Building Use or Occupancy	Date Built
42	VACANT (Supply Service Building)	1905
47	THEATER (Stinson Memorial Theater)	1891
49	LIBRARY (John Nelson Library)	1915
50	VACANT (Canteen)	1890
51	ENGINEERING SHOPS	1914
52	FACILITIES SUPPORT ADMIN	1914
53	ENGINEERING SHOPS	1914
54	Sheet Metal Shop	1905
55	A&MM WAREHOUSE	1900
58	GROUPS SHOP	1902
60	VACANT (Admin. Offices/ Ed. Therapy)	1890
62	VACANT (Greenhouse)	1892
65	CHAPEL	1899
72	Transformer House	1905
75	Transformer House; Sewage Plant Lab.	1905
76	Boiler House	1934
79	VACANT	1939
91	Single Garage	1915
93	Single Garage	1923
94	Single Garage	1915
95	Single Garage	1903
96	2 Car Garage	1903
97	MASON SHOP	1899
100	Pump House Well No. 2	1930
102	QUARTERS	1894
105	Gate House	1897
114	SECURITY	1938
118	VACANT	1906
119	INCINERATOR	1934
121	Storage (Morgue)	1895
122	Vacant (Mess Hall & Kitchen)	1937
123	12 Car Garage	1941
124	ADMINISTRATION	1942
127	COMMUNICATIONS	1947

Total for NIHCS, Marion: 71

Saginaw

17	Gas Meter House	1972
----	-----------------	------

Total for Saginaw: 1

155 Historic Assets in VISN 11

VHA Historic Assets for VISN 12

(Buildings Only)

Building #	Building Use or Occupancy	Date Built
Hines		
2	Admin/Eng. Shops	1929
12	Blind Center/MAS	1929
13	Blind Center	1929
14	Quarters	1932
16	Administration Offices	1929
17	Office of Human Resources	1929
18	VISN Admin Offices/Quarters	1929
20	Supply Depot/Garage	1921
21	Supply Depot/Storage	1921
23	Quarters	1929
24	Quarters	1929
25	Quarters	1929
26	Quarters	1929
27	Quarters	1929
28	Quarters	1929
29	Quarters	1929
31	Personnel Garage	1932
32	Personnel Garage	1932
35	Main Gate House	1929
51	Vacant	1944
53	Vacant	1944

Total for Hines: 21

Milwaukee

1	Sevice Offices (Dom. Administration)	1896
2	Vacant (Dom./Main Mess)	1869
3	Wadsworth Library	1891
4	Social Center	1894
5	Great Lakes Service Center (Dom. Quarters)	1894
6	VA Regional Office	1879
7	Compensated Work Therapy	1888
11	Personnel Quarters	1883
12	Chapel	1889
14	Personnel Quarters	1909
16	Personnel Quarters	1901
17	Personnel Quarters	1887
18	Personnel Quarters	1916
19	Personnel Quarters	1921
20	Warehouse	1896
34	Water Meter House	1888
37	Personnel Quarters	1902

Building #	Building Use or Occupancy	Date Built
38	Housekeeping Quarters	1886
39	Personnel Quarters	1868
41	Ward Memorial Theater	1881
45	Old Power Plant	1895
47	Housekeeping Quarters	1899
49	Personnel Quarters	1909
50	Personnel Quarters	1909

Total for Milwaukee: 24

North Chicago

29	Chicago Medical School	1914
----	------------------------	------

Total for North Chicago: 1

Tomah

CC	Connecting Corridors	1947
1	Housekeeping Quarter	1925
2	Storage	1932
3	Housekeeping Quarter	1915
5	Housekeeping Quarter	1920
6	Housekeeping Quarter	1920
8	Housekeeping Quarter	1915
10	Daycare	1925
12	Housekeeping Quarter	1920
15	Gymnasium	1910
18	Housekeeping Quarter	1910
23	Storage	1915
25	Recycling & AFGE	1905
32	IRM Building	1925
33	Storage & Switch Vault	1910
36	Fire Station & R/G/T	1930
40	M & R Shops	1943
400	Inpatient Med/Clinical/Admin	1946
401	Admin/Library	1946
402	Nursing Home Care	1946
403	Nursing Home Care	1946
404	PRRTP Beds	1947
406	Nursing Home Care	1947
407	Support/Outleased	1947
408	Inpatient Psych	1947

Total for Tomah: 25

71 Historic Assets in VISN 12

VHA Historic Assets for VISN 15

(Buildings Only)

Building #	Building Use or Occupancy	Date Built	Building #	Building Use or Occupancy	Date Built
Kansas City			53	Admin.-Gnds/Trans	1886
42	WINDSOR MANOR	1925	54	Fire Dept./Garage	1927
Total for Kansas City: 1			56	Duplex Quarters, Vacant	1915
Leavenworth			57	Transitional House	1921
1	Vacant (Domiciliary Building)	1886	61	Single Quarters	1900
2	Vacant (Domiciliary Building)	1886	64	Rec Hall/Credit Union/Post Office	1898
3	Vacant (Domiciliary Building)	1885	66	Chapel	1893
4	Vacant (Domiciliary Building)	1886	68	Duplex Quarters	1922
6	Vacant (Domiciliary Building)	1886	71	Administration	1932
7	Vacant Canteen/EMS (Domiciliary Building)	1886	73	Single Garage(B42)	1933
8	Vacant (Domiciliary Building)	1886	76	Storage (Quarters - Four Apartments)	1921
9	Vacant (Domiciliary Building)	1886	77	Engineering Shop	1918
10	Vacant (Domiciliary Building)	1886	80	Paint Storage	1928
11	Vacant (Domiciliary Building)	1886	81	Water Softening Plant	1938
12	Vacant (Domiciliary Building)	1886	88	Admin. & Clinical Hospital	1934
13	Vacant (Domiciliary Dining + Kitchen)	1908	89	Main Hospital	1933
14	Vacant (Domiciliary Building)	1886	90	Main Hospital	1933
18	Vacant (former Guard House)	1887	91	Main Hospital	1933
19	Storage (General Mess & Kitchen)	1886	94	Voluntary Service	1916
21	ORM	1902	95	Paint Building	1905
28	Plumbing Shop	1888	97	Engineering Shop	1904
29	Ward Memorial Bldg.	1888	100	Leased (Domiciliary Clinic)	1904
30	Lodge at West Gate	1910	110	Barn (Storage)	1901
33	Transportation Bldg	1920	112	15-Car Garage(Storage)	1936
34	Duplex Quarters, Vacant	1898	113	15-Car Garage(Storage)	1936
36	Storage Shed	1896	114	3-Car Garage(QTRS)	1936
37	Eng Storage	1897	115	4-Car Garage(Storage)	1936
39	Boiler Plant	1886	116	3-Car Garage(storage/qtr)	1936
40	Gate House	1908	117	Flammable/Haz Storage	1936
41	A&MMS/Warehouse	1899	119	Single Garage(Storage)	1928
42	Training Center (Single Quarters, Governor)	1887	120	Single Garage(Storage)	1928
43	Transitional House (Single Quarters, Treasurer)	1887	122	Hospital(NHCU/Psyc)	1939
44	Single Quarters, Student Housing (Surgeon)	1887	129	Engineer Shop	1923
45	Single Quarters (Quartermaster)	1901	140	Storage Shed	1948
46	Psychology Offices (Duplex Quarters)	1889	141	Vehicle Shed	1984
47	Chapel House	1906	143	Garage	1954
48	Single Quarters	1908	144	Garage	1954
49	Single Quarters, Vacant	1884	149A	Gas Meter House	1929
51	Single Quarters, Vacant	1886	Total for Leavenworth: 73		
			Marion, IL		
			1	Main Hospital	1940
			2	Support Bldg. (former Dining Hall)	1972
			8	Mental Health (former Nurses' Quarters)	1940

VHA Historic Assets for VISN 15

(Buildings Only)

Building #	Building Use or Occupancy	Date Built
13	Engineering/Business (former Director's Quarters)	1940
14	Boiler Plant	1940
15	Engineering Shops (former Garage)	1940
16	Warehouse	1940

Total for Marion, IL: 7

Wichita

CC	Connecting Corridors	1934
1A	Radiology/IRM	1945
1	Wards Main Building	1933
2	Kitchen	1933
3	Administration	1933
4	Auditorium (Recreation)	1933
5	MH/Admin	1933
6	Administration	1933
7	SATU Outpatient	1933
10	Engineering Garage	1933
11	Safety Office	1933
12	Engineering Warehouse	1933
13	Boiler Plant	1933
16	Engineering Shop	1933
17	Gas House	1933
19	Clinical Bldg.	1939
20	Engineering Shops	1933

Total for Wichita: 17

98 Historic Assets in VISN 15

VHA Historic Assets for VISN 16

(Buildings Only)

Building #	Building Use or Occupancy	Date Built
Alexandria		
1	Administrative/Front Office	1929
2	Extended Care/Clinical Support	1929
3	Clinical Support/Women's Clinic	1929
4	Nutrition & Food Service/Kitchen	1929
5	Administrative Support	1929
6	CDOP/Administrative Support	1929
7	General Medicine/Surgery/Primary	1950
8	Canteen/Auditorium	1940
9	Mental Hygiene/Psychiatry	1929
13	Maintenance Shops	1929
14	Boiler Plant	1929
15	Fire Station/Grounds	1931
18	Quarters/Director	1929
19	Quarters/Duplex	1929
20	Quarters/Duplex	1929
21	Quarters/Duplex	1929
22	Quarters/4-Plex/Residents	1929

Total for Alexandria: 17

Biloxi

1	Main Hospital	1932
2	Intermediate Care	1933
5	Outpatient	1933
6	Quarters	1933
7	Admin.Bldg	1933
8	Admin.Bldg.	1933
9	Warehouse	1933
10	Engineering Office	1933
11	Pump House	1932
12	Guard Shack	1933
16	Engineering Shops	1934
17	Rec Hall	1935
18	Credit Union	1937
19	Domiciliary	1937
21	Kitchen & Dining	1937
22	Garage	1933
23	Two Car Garage	1937
32	Storage	1939
49	Pest Control-DEMOLISHED	1933

Total for Biloxi: 19

Fayetteville, AR

1	HOSPITAL	1933
---	----------	------

Building #	Building Use or Occupancy	Date Built
2	INDUSTRIAL	1933
3	RECREATION	1933
4	OFFICES	1933
5	QUARTERS	1933
6	QUARTERS	1933
7	QUARTERS	1933
8	Garage/Warehouse	1933
9	LAUNDRY & SHOPS	1933
10	BOILER PLANT	1933
11	SEAMSTRESS	1933
16	Gate House	1933

Total for Fayetteville, AR: 12

Gulfport

1	Admin, Clinic	1923
2	Kitchen, Dining Admin	1923
3	Psych. Ward	1923
4	Office (fiscal, MCCR, payroll, & accounting)	1923
5	Administration	1923
6	Boiler Plant	1923
32	Engineering Shops	1917
33	Engineering Shops	1935
40	Building Management	1931
41	Nursing Home Care	1937
42	Security	1936
43	Quarters(demolished)	1935
44	Quarters(demolished)	1935
45	Engineering Storage	1934
52	Quarters(demolished)	1928
53	Quarters(demolished)	1928
57	Psyc Ward	1946
60	Supply Storage	1923
61	Bldg Mgmt Storage	1927
62	Psyc Ward	1931
63	Chapel	1931
64	Admin Building	1931
76	Therapeutic Exercise Clinic	1958
113	M.A.S. Storage	1936
117	Occupational Therapy	1941

Total for Gulfport: 25

N. Little Rock

VHA Historic Assets for VISN 16

(Buildings Only)

Building #	Building Use or Occupancy	Date Built
1	Engineering Administration (Enlisted Barracks)	1896
2	Engineering/Shop (Mess Hall)	1896
3	Engineering/Shop (Kitchen)	1896
4	Engineering/Storage (Mess Hall)	1896
5	Regional Counsel (Guard House)	1896
6	Firemen's Dorm (Work Shop)	1896
7	LREERC/Engineering/Storage	1896
8	Engineering (Stable)	1896
11	LREERC (Hospital)	1896
12	Duplex Quarters	1896
13	Duplex Quarters	1896
14	Duplex Quarters	1896
15	Single Quarters	1896
16	Engineering/Transportation (Work Shop)	1896
18	Storage (North Little Rock)	1896
22	Fire Station	1901
24	Duplex Quarters	1898
32	Fiscal (Post Headquarters)	1905
33	Education/VISN Staff	1905
34	LREERC (Enlisted Barracks)	1906
35	Telephone Switch (kitchen)	1907
36	Human Resources	1907
37	Human Resources	1907
38	LREERC (kitchen)	1907
39	PRRPT	1907
40	Quarters (Director's Quarters)	1907
41	Fiscal/A&MMS (Officer's Quarters)	1907
45	Water Tower (North Little Rock)	1912
54	Garage (North Little Rock)	1907
Total for N. Little Rock: 29		

Building #	Building Use or Occupancy	Date Built
------------	---------------------------	------------

102 Historic Assets in VISN 16

VHA Historic Assets for VISN 17

(Buildings Only)

Building #	Building Use or Occupancy	Date Built
Dallas		
1	MENTAL HEALTH	1940
3	RESEARCH LABORATORIES	1940
5	HOSP. BASED PRIMARY CARE	1940
6	DAY TREATMENT/DAY HOSP.	1940
7	Texas Tech Sch of Pharmacy	1940
8	ACQ & MAT MANAGT	1940
9	ENGINEERING SERVICE (ADMIN)	1955
10	BOILER PLANT	1940
Total for Dallas: 8		

Kerrville

1	FISCAL/A&MM/AUD	1923
2	MAS/EDUCATION	1923
11	MAIN HOSPITAL	1923
18	LAUNDRY	1923
20	QUARTERS	1923
22	PAINT SHOP	1923
29	ENGINEERING SHOPS	1923
46	GARAGE	1923
47	A&MM WAREHOUSE	1923
48	REHAB SHOP	1923
49	QUARTERS	1923
50	QUARTERS	1923
51	QUARTERS	1923
Total for Kerrville: 13		

Waco

1	Admin/Clinical	1932
2	ADMINISTRATIVE	1932
4	OUTPATIENT CLINIC/LAB CLINIC	1932
5	PHARMACY/MAILROOM/PAT. ED.	1931
6	Auditorium	1932
7	Blind Rehab Unit/Vacant	1932
8	CANTEEN/ADMIN.	1932
9	Vacant Bed Bldg.	1935
10	Nursing Home	1935
11	Nursing Home (GP)	1935
12	REG'L COUNCIL/PROSTHETICS/EMS	1931
15	A&MM/WAREHOUSE	1931
16	GARAGE MISC.	1932
17	CONSOLIDATED LAUNDRY	1931
18	ST'DNT QTRS	1932

Building #	Building Use or Occupancy	Date Built
19	VOLUNTARY SVC. (former Director's Quarters)	1932
20	QTRS	1932
21	Vacant Quarters (vacant, historical, no plans)	1932
24	F.M.S./SHOPS	1936
29	Gas Meter House	1932
90	PTSD/PRRTP	1945
91	Vacant Bed Bldg.	1945
92	VA Fiance Center	1943
93	ADMIN	1945
94	Inpatient Psychiatry	1945
Total for Waco: 25		

46 Historic Assets in VISN 17

VHA Historic Assets for VISN 18

(Buildings Only)

Building #	Building Use or Occupancy	Date Built
Albuquerque		
1	Psychiatry	1932
2	VCS - Recreation	1932
3	Psychiatry	1932
4	Administrative	1932
5	Engineering shops	1932
6	Engineering shops	1932
8	Administrative - Engineering shop	1932
9	Laundry	1932
10	Research	1932
11	Research - Rehabilitation	1932
12	Research	1932
13	NDMS	1932
14	Research	1932
15	Rehabilitation	1932
18	Regional Counsel	1939
32	Gate House	1937

Total for Albuquerque: 16

Amarillo

1	Hospital/Administration	1939
4	Food & Nutrition/Administration	1939
7	Administrative	1939
10	Water Tower	1939
11	Boiler Plant	1939
12	Warehouse	1939
14	Maintenance Shop	1939
19	Water Treatment	1939

Total for Amarillo: 8

Prescott

T-1	(T-1) - Voluntary Service	
T-5	(T-5) - Credit Union, Canteen Storage	
1	Quarters	1903
2	Quarters	1905
3	Quarters	1905
4	Quarters	1905
5	Quarters	1905
6	Quarters	1905
7	Quarters	1905
8	Quarters	1905
9	Quarters	1905
10	Quarters	1905
11	Museum Annex (Officer's Quarters)	1905

Building #	Building Use or Occupancy	Date Built
12	Administration	1905
13	Administration	1905
14	Administration	1905
15	Theater	1905
16	Canteen	1905
17	Administration	1905
19	Warehouse	1905
20	Warehouse	1905
22	Engineering Administration	1920
23	Engineering Shops	1910
24	Quarters	1908
25	Quarters	1905
26	Quarters	1905
27	Quarters	1905
28	Administration	1905
29	Engineering Shops	1912
31	Engineering Shops	1910
32	Engineering Shops	1910
42	Warehouse	1903
70	Administration	1922
76	Quarters	1922
77	Quarters	1922
78	Non-Housekeeping Quarters	1922
98	Garage (Residential)	
99	Garage (Residential)	
107	Hospital	1937
108	Dietetics/PM&RS	1939

Total for Prescott: 40

Tucson

1	Administration/Canteen	1928
2	Patient Care	1928
3	Kitchen/Canteen	1928
4	Recreation;Library/Auditorium	1929
5	Facilities/Fiscal/Day Care/A&MMS	1929
6	Research	1928
7	Day Care Psych (former Manager's Quarters)	1928
8	SWBRC Housing Training Unit (former Officers Qtrs)	1928
9	Home Based Primary Care (former Officers Qtrs)	1928
10	Research	1978

VHA Historic Assets for VISN 18

(Buildings Only)

Building #	Building Use or Occupancy	Date Built
11	SWBRC Housing Training Unit (former Officers Qtrs)	1929
12	Home Based Primary Care (former Officers Qtrs)	1929
13	Voc. Rehab. (former Officers Qtrs)	1929
19	Gate House	1928
22	Personnel Garage	1930
30	Southwestern Blind Rehab. Ctr.	1928
38	Clinical Building	1958

Total for Tucson: 17

Building #	Building Use or Occupancy	Date Built
------------	---------------------------	------------

81 Historic Assets in VISN 18

VHA Historic Assets for VISN 19

(Buildings Only)

Building #	Building Use or Occupancy	Date Built
Cheyenne		
1	Main Hospital	1932
4	AM&M, Fiscal	1932
5B	Voluntary Svc.	1952
5A	Human Resources	1952
6	Quarters	1952
11	Engineering	1932
12	Warehouse	1932
13	Boiler Plant	1932
18	Quarter's Garage	1932
19	Grounds Equipment Storage	1932
20	AM&M Storage	1932

Total for Cheyenne: 11

Denver

126 FtL	Kit Carson Chapel Ft Lyon	1860
---------	---------------------------	------

Total for Denver: 1

Fort Harrison

2	Dormitory	1895
3	Quarters	1895
4	Quarters	1895
5	Quarters	1895
11	Quarters	1895
12	Quarters	1895
13	Quarters	1895
14	Quarters	1895
15	Storage	1895
16	Fire Station	1895
17	Fitness Center	1895
20	Grounds Shops	1895
31	Storage	1897
35	Quarters	1890
41	Quarters	1905
42	Quarters	1905
43	Storage	1905
47	Storage	1908

Total for Fort Harrison: 18

Miles City

1	Administration Bldg Miles City	1948
2	Quarters	1948
3	Administration	1948
4	Quarters	1948

Building #	Building Use or Occupancy	Date Built
5	Quarters	1948
6	Quarters	1948

Total for Miles City: 6

Sheridan

1	Outleased	1907
2	Outleased	1902
3	Outleased	1907
4	Outpatient Residential	1907
5	Offices	1903
6	PM&RS/Nursing Adm.	1902
7	Support/N&FS/Chaplain	1904
8	Psyc Outpatient/ICU	1907
9	Hospital Adm./Diag.	1909
10	Quarters	1902
11	Shop/PM&RS	1902
12	Quarters	1907
13	Quarters	1907
14	Quarters (2)	1907
15	Quarters	1904
16	Quarters (2)	1907
17	Quarters (2)	1904
18	Quarters (2)	1904
19	Quarters (2)	1904
20	Quarters (2)	1902
21	Quarters (2)	1902
22	Quarters	1907
23	Bowling Alley	1909
24	Outleased	1905
27	Quarters (4)	1907
28	Quarters	1902
31	Laundry	1902
32	Outleased > RGCA	1904
34	FMS Storage/Safety Office	1907
35	A&MMS Warehouse	1909
36	FMS/Elec. Shop	1907
37	FMS//Plmb./Carp. Shops	1907
39	FMS/Storage	1909
41	FMS Garage & Storage	1909
42	FMS/Maint. Shop	1909
55	FMS/Paint shop	1909
58	Meter House	1900
61	Voluntary/Recreation Svcs.	1932
64	Outleased > Wyster	1932

VHA Historic Assets for VISN 19

(Buildings Only)

Building #	Building Use or Occupancy	Date Built
71	Clinical/Outpt./Ward	1932
83	FMS Mtce. Office	1933
86	NHCU	1945
86A	Basement/Canteen	1945
90	Boiler House	1949
91	Engineering	1949
106	Electric Substation	1951

Total for Sheridan: 46

Building #	Building Use or Occupancy	Date Built
------------	---------------------------	------------

82 Historic Assets in VISN 19

VHA Historic Assets for VISN 20

(Buildings Only)

Building #	Building Use or Occupancy	Date Built	Building #	Building Use or Occupancy	Date Built
American Lake			29	Library/Learning Resource Center	1907
2	Nursing Home Care Unit	1923	34	A&MM/Warehouse	1910
3	Dietetics	1923	43	IRMS/Warehouse	1909
4	Domiciliary	1923	44	Substance Abuse/Pharm/Research	1909
5	Blind Rehabilitation	1923	45	Research (Single Quarters)	1909
6	Vacant/Undergoing Seismic Renovation	1923	46	Boiler Plant/Engineering Shops	1928
7	Inp. Mental Health	1923	50	Engineering Office	1890
8	Administration	1923	67	Inpatient Care/Clinical	1932
9	Auditorium	1923	69	Gate House	1932
10	Quarters	1923	Total for Boise: 18		
11	Quarters	1923	Portland		
12	Quarters	1923	6	Research	1928
13	Quarters	1923	16	Administration	1928
14	Quarters	1923	Total for Portland: 2		
15	Quarters	1923	Roseburg		
16	Administrative Bldg.	1923	1	Main Building	1933
17	Engineering/QI	1923	2	Continued Treatment	1933
18	Research/IRM	1923	3	Administrative Bldg.	1933
19	Warehouse	1923	4	Director's Quarters	1933
20	Transportation	1923	5	Quarters	1933
21	Warehouse	1923	6	Quarters/AHEC	1933
23	Boiler Plant	1923	7	Boiler Plant	1933
27	Maintenance Office	1923	9	Switchgear	1933
50	Maintenance Shops	1923	10	Engineering Office/Electric Shop	1933
61	Mental Health	1932	11	Laundry	1933
62	Exercise Hall	1932	13	Warehouse/Engineering Shops	1933
71	Library	1932	16	Canteen/Library/Chapel	1936
81	Main Hospital	1947	17	Mental Health Bldg.	1938
85	Dental/Audiology/Vacant	1947	47	Electrical Storage	1933
111	Chapel	1957	Total for Roseburg: 14		
Total for American Lake: 29			Walla Walla		
Boise			1	Directors Quarters	1858
1	Human Resources (former Single Quarters)	1863	2	Duplex Quarters	1858
4	vacant (former Single Quarters)	1870	3	Duplex Quarters	1858
6	Eye Clinic	1863	4	Duplex Quarters	1858
8	Engineering Shops and Dormitory	1932	5	Duplex Quarters	1858
13	Director's Suite	1886	31	Grounds Storage	1859
23	Mental Health	1905	41	Excess Storage	1888
24	AHEC and District Counsel	1905	48	Quarters	1888
27	Inpatient MedSurg/Clinical	1907	49	Quarters	1888
28	Laundry	1906	63	Plumbing Shop	1904

VHA Historic Assets for VISN 20

(Buildings Only)

Building #	Building Use or Occupancy	Date Built
65	Carpenter Shop	1904
68	Admin. (T.B. Hospital Building)	1906
69	Mental Health (G.M. Hospital Building)	1906
Total for Walla Walla: 13		

Building #	Building Use or Occupancy	Date Built
------------	---------------------------	------------

76 Historic Assets in VISN 20

VHA Historic Assets for VISN 21

(Buildings Only)

Building #	Building Use or Occupancy	Date Built
------------	---------------------------	------------

San Francisco

1	Research/Clinical/Admin.	1934
6	Research/Admin.	1934
7	Canteen/Auditorium/Chapel	1934
8	Mental Health	1934
9	Mental Health Clinics (former Staff Quarters)	1934
10	Quarters	1934
11	Quarters	1934
12	Research	1934
13	Engineering/Research	1934
18	Research/Admin. (former Personnel Quarters)	1934
21	Animal Facility	1934

Total for San Francisco: 11

11 Historic Assets in VISN 21

VHA Historic Assets for VISN 22

(Buildings Only)

Building #	Building Use or Occupancy	Date Built
West Los Angeles		
13	Storage	1929
14	Single Garage (Wadsworth Division)	1900
20	Chapel	1900
23	Quarters	1900
33	Quarters	1893
44	Engineering Shop	1897
66	Trolley House	
90	Duplex Quarters	1927
91	Duplex Quarters	1927
104	Garage 2-Car	1928
105	Garage 3-Car	1928
111	Vacant Gate House (West Gate)	
113	Animal Research	1930
114	Research Lab	1930
115	Research Lab	1930
116	Outlease New Directions Homeless Vets	1930
117	Research Lab (former Mortuary)	1930
156	Vacant	1921
157	Vacant	1928
158	Mental Health Clinic	1921
199	Vacant (Hoover Barracks)	1932
205	Mental Outpatient Psychiatry (Brentwood)	1937
206	Mental Heath Homeless (Brentwood)	1940
207	Outleased Salvation Army (Brentwood)	1940
208	Mental Health/Voc Rehab Medicine (Brentwood)	1945
209	Vacant	1945
210	Research/MIREC (Brentwood)	1945
211	Theater (Brentwood)	1946
212	Salvation Army/Prosthetics	1938
213	NHCU Pod & Dialysis	1938
214	Domiciliary	1938
215	NHCU	1938
217	Domiciliary	1941
218	Administration Building	1941
220	Dental/Research	1939
226	Outleased Wadsworth Theater	1940
256	Day Treatment Center Mental Health	1946
257	Mental Health/New Directions/Methadone (Brentwood)	1946

Building #	Building Use or Occupancy	Date Built
258	Administration/Mental Health (Brentwood)	1946
264	FBI (Annex Theater)	1944
278	Vacant (To Be Demolished)	1943
296	Chemical Storage House (Wadsworth Division)	1949

Total for West Los Angeles: 42

42 Historic Assets in VISN 22

VHA Historic Assets for VISN 23

(Buildings Only)

Building #	Building Use or Occupancy	Date Built	Building #	Building Use or Occupancy	Date Built
Black Hills, Fort Mead			65	Student Quarters	1909
1	Single Residence	1891	66	Single Residence	1928
2	Duplex Residence	1905	68	Gymnasium	1933
3	Duplex Residence	1905	69	Single Residence	1889
4	Duplex Residence	1896	70	Single Residence	1885
5	Duplex Residence	1896	71	Single Residence	1880
6	Single Residence	1879	72E	Duplex Residence	1937
9	Duplex Residence	1909	72W	Duplex Residence	1937
10	Duplex Residence	1909	75	Tool House	1904
11	Single Residence	1906	85	Day Care Center	1938
12	Single Residence	1906	87	Facility Maintenance Storage	1935
13	Single Residence	1906	88	CWT Work Shop	1935
16	Duplex Residence	1906	89	Engineering Building	1935
17	Duplex Residence	1906	90	HEDS/CHEP	1935
20	Single Residence	1879	91	Motor Pool	1934
21	Single Residence	1879	102	Swimming Pool	1940
22	Single Residence	1888	103	National Guard	1909
23E	Duplex Residence	1939	105	Duplex Residence	1911
23W	Duplex Residence	1939	106	Duplex Residence	1911
24E	Duplex Residence	1940	108	Outlease > National Guard	1911
24W	Duplex Residence	1940	109	Storage	1911
25	Single Residence	1881	110	Storage	1911
26	Single Residence	1890	136	Pump House	1938
31	Duplex Residence	1901	139	Gas Regulator	1911
32	Duplex Residence	1901	144	Single Residence	1939
33	Duplex Residence	1906	Total for Black Hills, Fort Meade: 67		
34	Duplex Residence	1906	Black Hills, Hot Sprngs		
37	Single Residence	1880	1	Director, Administration	1907
40	Carpenter/Paint Shop	1935	2	Dom Kitchen, EMS	1907
45	Paint Storage	1906	3	Dom Quarters, AMMS, Fiscal	1907
46	Supply Warehouse	1909	4	Domiciliary	1907
47	Fall-Out Shelter	1908	5	Dom Quarters, Canteen	1907
48	Facility Management Warehouse	1879	6	Dom Quarters, Warehouse	1907
50	Post Office	1901	7	Dom Quarters, Arts & Crafts	1907
51	Fourplex Residence	1909	8	Dom Quarters, Recreation	1907
53	Admin Building	1901	9	Protestant Chapel	1907
54	Outlease > National Guard	1901	10	Catholic Chapel, Electric Room	1907
55	Museum	1909	11	Auditorium, Library	1915
58	Outlease > National Guard	1906	12	Hospital	1926
60	Outlease > National Guard	1908	14	Facilities Management, MAS	1907
61	Single Residence	1938	16	Greenhouse	1913
63	Chapel	1904	17	Equipment Repair	1907
64	Theater	1931	18	Boiler Plant	1907

VHA Historic Assets for VISN 23

(Buildings Only)

Building #	Building Use or Occupancy	Date Built
20	Apartments	1910
21	Apartments	1926
23	Single Residence	1907
24	Single Residence	1907
25	Duplex Residence	1907
26	Single Residence	1907
27	Single Residence	1913
28	Duplex Residence	1927
29	Duplex Residence	1920

Total for Black Hills, Hot Sprngs: 25

Des Moines

1	Main Hospital	1933
2	Kitchen/Admin/SPD	1933
3	Main Administration	1933
4	Canteen/Library	1933
5	Domiciliary	1933
6	Quarters	1933
7	Quarters	1933
8	Quarters	1933
9	Linen Processing/Shops	1933
10	Warehouse/Shops	1933
11	Boiler Plant	1933
13	Transformer Building	1933
15	Garage	1934
16	Garage	1933
19	Tractor Shed	1935
20	Boiler Fed. Water Treat Plant	1938

Total for Des Moines: 16

Knoxville

HA-1	Lodge	1907
27	Administration	1905
28	Quarters (Housekeeping)	1905

Total for Knoxville: 3

Lincoln

1	MAIN HOSPITAL	1929
2	SUPPORT	1929
3	Dietetics/Support	1930
4	AUDITORIUM (office/mtg. space)	1929
5	ADMINISTRATIVE	1929
6	Quarters/Engineering	1929
7	Quarters/CHEP	1929

Building #	Building Use or Occupancy	Date Built
8	Vacant Quarters	1929
9	PUMP HOUSE	1929
12	WAREHOUSE	1930
17	STORAGE SHED	1931
24	ENGINEERING SHOPS	1930
34	STORAGE BLDG.	1930

Total for Lincoln: 13

Sioux Falls

1	M&BH/Administration	1920
5	Hospital/NHCU	1948

Total for Sioux Falls: 2

St. Cloud

1	Amb Care/Medical	1923
2	Domiciliary	1923
3	Administrative/Dental	1923
4	Administration/Dietetics	1923
7	Boilerhouse	1923
8	Recreation	1924
9	Domiciliary	1924
10	Hotel (Officer's Duplex Quarters)	1924
11	Day Care Center	1924
14	Warehouse	1926
28	Primary Care/MH&B	1929
29	Business/Swing	1932
48	Administrative/ADHC	1936
49	Extended Care	1936
50	Extended Care	1943
51	Extended Care	1943

Total for St. Cloud: 16

142 Historic Assets in VISN 23
